



**K-12 Database Design and Data
Element Dictionary -
Student Testing Edition**

V 2008.01

**NOT USED FOR SUBMISSION. FOR
REFERENCE TO DOWNLOADED FILES
ONLY.**

Effective August 2008

Table of contents

1.0 CAL-PASS STAFF CONTACTS	3
2.0 INTRODUCTION TO THE K-12 CAL-PASS DATABASE DESIGN AND DATA ELEMENT DICTIONARY	4
2.1 Overview:	4
2.2 Database Design:	4
2.3 Performing the records match:	4
2.4 Data Submission:	5
2.5 File Names:	6
2.6 Data Format:	6
2.7 Reporting Domain:	6
2.8 Cal-PASS Entity Relationships	6
3.0 STUDENT TESTING DATA FILE ELEMENTS	8
3.1 STAR Test Information	8
3.1.1 STAR Data File Download Structure	8
3.1.2 STAR Demographic file (D<UserID>Dem.txt) Data Elements	8
3.1.3 STAR CST file (D<UserID>CST.txt) Data Elements	12
3.1.4 STAR CAT/6 file (D<UserID>CAT.txt) Data Elements	16
3.2 CAHSEE Test Information	19
3.2.1 CHASEE Data File Download Structure	19
3.2.2 CAHSEE Data Elements	19
4.0 APPENDIX A –LANGUAGE CODES	72
4.1 Numeric order by code	72
4.2 Alphabetical order by language	73

Cal-PASS Data Element Dictionary

Effective date: August 2008

Developed by Cal-PASS

1.0 Cal-PASS Staff Contacts

Cal-PASS Data Submission or MOU Questions	Bill Duvic <i>Data Technician</i> Mary Kay Patton <i>Director of Information Technology</i>	Email: bduvic@calpass.org Phone: (619) 933-0381 Email : mkpatton@calpass.org Phone: (916) 995-3183
Project information	Brad C. Phillips, Ph.D. <i>Executive Director</i> Michelle Kalina, Ed.D. <i>Senior Director of Operations</i> Jordan Horowitz <i>Senior Director for Special Projects</i>	Email : bphillips@calpass.org Phone : (619) 252-8503 Email : mkalina@calpass.org Phone : (916) 759-2486 Email : jhorowitz@calpass.org Phone : (562) 743-7920
Research	Terrence Willett <i>Director of Research</i>	Email : twillett@calpass.org Phone : (831) 277-2690
Segment Representatives	Bill Piland, Ed.D. <i>Higher Education Coordinator</i> Warren Williams <i>K-12 Coordinator</i>	Email : piland1@mail.sdsu.edu Phone : (619) 300-9157 Email : wwilliams@cetc.net Phone : (619) 572-5255
Starting / Joining a Consortium	South State: Shelly Valdez, Ed.D. <i>Director of Regional Collaboration</i> North State: Eden Dahlstrom, Ed.D. <i>Associate Director of Regional Collaboration</i>	Email : svaldez@calpass.org Phone : (619) 219-9855 Email : edahlstrom@calpass.org Phone : (530) 204-7129

2.0 Introduction to the K-12 Cal-PASS Database Design and Data Element Dictionary

2.1 Overview:

The Cal-PASS data system consists of a number of tables designed to collect and organize information on students, their enrollments, assessments and their achievement. This information is used to give faculty and others specifics on how well prepared their students are for the next level of instruction, to better align inter-segmental curriculum, to increase the communication between and among segments, to give a clearer picture of transfer students and more.

2.2 Database Design:

The database design consists of a set of related tables/files (student file, course enrollment file, award file, and assessment file). A separate set of tables exists for each segment (K12, Community College and University) in the Cal-PASS database and each table contains clearly defined data elements and formats for each element. These tables contain the “core” Cal-PASS dataset. Additional elements may be collected and are titled “Custom files”. The definition of the file layout for these custom files is determined by the individual member district. A visual depiction of the database structure is on the following page.

2.3 Performing the records match:

There are several fields included in the Cal-PASS dataset that may be used for matching.

Social Security Number: This is the first and most reliable match.

Derived key 1: If the SSN is not available, the derived key 1 is used. This key is created using the first 3 letters of the first name, the first 3 letters of the last name, the student’s birth date and gender. This key is most reliable within regions. Use of this key with extremely large datasets may result in false matches.

Derived key 2: The derived key 2 uses the same algorithm as the derived key 1 with the addition of the school of origin.

Statewide Student Identifier: By Spring 2006, all K-12 students in California were required to have a unique CSIS Number. This field should be used for matching students within the K-12 segment (middle school students in one district to high school in another district, for example).

Note: The core table for all segments is the student table and it carries the fields above. The other tables (course, award, STAR, CAHSEE) link to the student table via the school ID, academic year or term ID and the Student ID. For this reason, the student data file MUST ALWAYS be validated first. If not, the other data files will error on every record due to miss-matched reference keys.

Cal-PASS Data Element Dictionary

Effective date: August 2008

Developed by Cal-PASS

The Custom table carries all identifiers and may be used independently from the student file. It does not hold referential integrity with the student table.

2.4 Data Submission:

All data is validated locally via the Cal-PASS Data Validation Program prior to submission. The program and its instructional user guide are available for download at <http://www.calpass.org/Data/Default.aspx>. The validation program checks the field values, assists with the creation of the K-12 STAR and CAHSEE files, encrypts any student identifier and puts the data files into a format which can be uploaded to the Cal-PASS database. The validated files are placed in **C:\Program Files\Cal-PASS Validator\Uploads**.

Submissions should be in accordance with this DED ([see section on data format below](#)).

- **Initial data submission:** 5 academic years of data (if possible).
- **Continuing annual submission:** 1 academic year of data submitted after the year has been completed and the records have been closed. You will be notified of data submission dates and procedures for submission.

K12 districts or HS districts: Participants submit six files: student file, course enrollment file, award file, STAR file, CAHSEE files and transmittal file (tells the system how many records are in the submission).

K-8 districts: Participants submit four files: student file, course enrollment file, STAR file and transmittal file.

Universities: Institutions submit four files: student file, course enrollment file, award file and transmittal file. Each file should contain data for all terms included in the academic year (and for multiple years for initial submission).

Community Colleges: Most of the Cal-PASS data comes directly from the Chancellor's Office MIS submission. There is one piece of data (SB28, partial first name) that was not part of MIS prior to Summer 2004 and it is needed to generate the derived key fields used by Cal-PASS. New Cal-PASS members will receive an email from the Cal-PASS database administrator regarding the collection of this required data element for terms when it was not part of the MIS submission. Institutions submit one student file for all terms prior to Summer 2004 (or whenever the district began including SB28). No future submissions will be required if the district includes the data element SB28 in the MIS submission. SB28 was first introduced as an optional element but became mandatory in 2008.

All Segments Custom files: Cal-PASS members who elect to include Custom files include a custom file with their regular submission. If you have a data set that you would like to submit in a custom file, please contact help@calpass.org.

Cal-PASS Data Element Dictionary

Effective date: August 2008

Developed by Cal-PASS

2.5 File Names:

Prior to data submission, the data files are checked by the Cal-PASS Validation Program. This program is available on the Cal-PASS website. The Validation Program looks for files named using the following naming convention:

Format: T99999K.txt

Where T = Type of file (S = Student file, C = Course enrollment file, A = Award file, D=STAR, E=CAHSEE, T = Transmittal file, and O = Custom file)

99999K= 5 digit district code (positions 3 – 7 of the CDS code) padded with a 'K'

Example: C68130K.txt is the file name for the course file from Grossmont Union High School District.

2.6 Data Format:

All input files are in a comma delimited format and do not use text identifiers. Contact the Cal-PASS Database Administrator (help@calpass.org) if you are unable to submit data using this format.

NOTE: Be sure there are no commas in any data field.

2.7 Reporting Domain:

K-12 districts submit data for each student who was enrolled during the academic year and received a grade in at least one course or class.

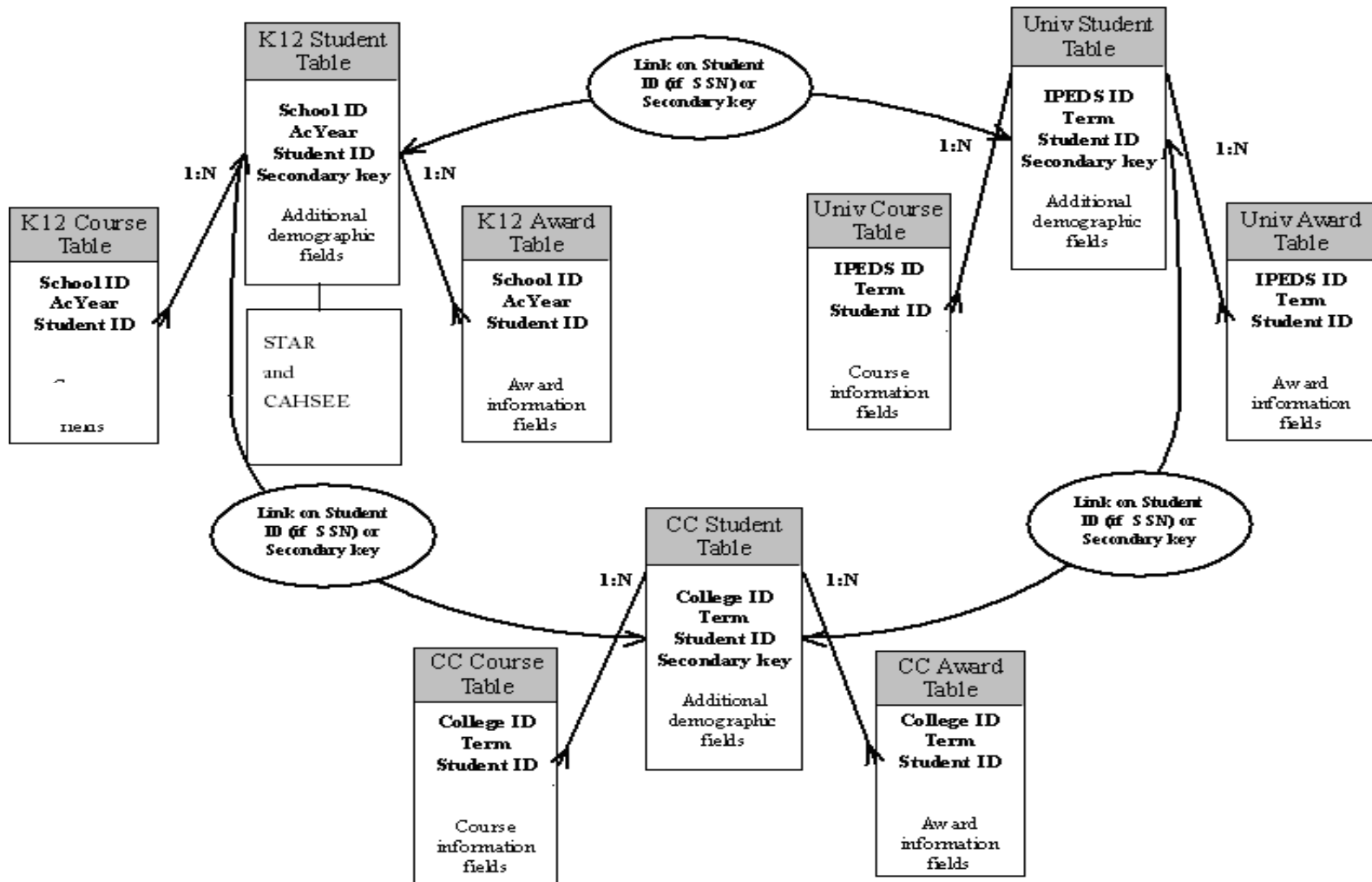
Note: Variations to this domain are sometimes negotiated within each regional consortium. The Cal-PASS database administrator must be notified if your data does not conform to this domain so it may be noted in the “caveats to the data” section of the Cal-PASS website.

2.8 Cal-PASS Entity Relationships

On the next page, you can see a flowchart, illustrating how the data submissions are connected for inter-segmental analysis.

Cal-PASS Entity Relationships

Primary Tables Only



Cal-PASS Data Element Dictionary

Effective date: August 2008

Developed by Cal-PASS

3.0 Student Testing Data file Elements

3.1 STAR Test Information

These files are not created by the Cal-PASS members. The validation program will prompt the user to insert the STAR test CD for the appropriate year and will extract the necessary fields directly from the CD. The file D<district_id>.txt will be placed in the Output folder and is to be submitted along with the Student, Course, Award, and Transmittal files. Only 1 file is submitted. Data are normalized when loaded to the Cal-PASS database.

3.1.1 STAR Data File Download Structure

Filenames: D<UserID>Dem.txt
 D<UserID>CST.txt
 D<UserID>CAT.txt

3.1.2 STAR Demographic file (D<UserID>Dem.txt) Data Elements

Field Names (first row of download file)	Description of Field	Notes:
Derived Key 1	This field will be created by the Cal-PASS validator program using an algorithm based on the name, date of birth and gender and may be used to match students who do not have an SSN.	
Derived Key 2	This field will be created by the Cal-PASS validator program using an algorithm based on the name, date of birth and gender and may be used to match students who do not have an SSN.	
CDS Code	The 14 digit County-District-School code issued	

	by the California Department of Education	
Academic Year	Date range format YYYY, e.g., 0102 (for 2001 – 2002). Note: The academic year is considered Fall, Spring, and Summer.	
Local Student Identifier	Identifier used by the local district	
Statewide Student ID	Unique identification number for the student assigned to or by the first California district in which the student is enrolled in accordance with CSIS established standards.	
RecordType		
UIN		
Grade Level	Grade of student at time of test	
English Proficiency	1 – English Only 2 = Initially-Fluent English Proficient (I-FEP) 3 = English Learner 4 = Reclassified–Fluent English Proficient (R-FEP) “+” Multiple marks	
Primary Language	Please see Appendix A for language codes	
Primary disability	000 - No special services 010 - Mental Retardation (MR) 020 - Hard of Hearing 030 - Deaf 040 - Speech or Language Impairment 050 - Visual Impairment	

	060 - Emotional Disturbance 070 - Orthopedic Impairment 080 - Other Health Impairment 090 - Specific Learning Disability 100 - Deaf-Blindness 110 - Multiple Disabilities 120 – Autism 130 – Traumatic Brain Injury	
Parent Education Level	10 - Graduate school/postgraduate training 11 - College graduate 12- Some college (includes AA degree) 14- High School Graduate 15- Declined to State or Unknown ++ Multiple marks	
Test Grade Level		
Birth date		
Gender		
DocCode		
ELDate		
RFEDate		
RFEPProficient		
RecvTitleServices		
MigrantEd		
IndianEd		
GiftedAndTalented		

Cal-PASS Data Element Dictionary

Effective date: August 2008

Developed by Cal-PASS

ELProgramType		
ELLessThan12Months		
EnrollLess90Days		
NSLP		
AttndNonPubScholIEP		
NPSSchoolCD		
STSOriOriginCountry		
SpecialEdExitDate		
PrimaryEthnicity		
OtherBlackAfricanAm		
OtherAmIndianAlaskaNtv		
OtherChinese		
OtherJapanese		
OtherKorean		
OtherVietnamese		
OtherAsianIndian		
OtherLaotian		
OtherCambodian		
OtherAsian		
OtherFilipino		
OtherHispanicLatino		
OtherHawaiian		
OtherGuamanian		
OtherSamoan		
OtherTahitian		

Cal-PASS Data Element Dictionary

Effective date: August 2008

Developed by Cal-PASS

OtherPacificIslander		
OtherWhite		
DistrictCntCBEDS		
SchoolCntCBEDS		
CalReadListNumber		
UnmatchedWriting		
UnmatchedGrade3		
EAPELAStatus		
EAPMathStatus		
GroupName		
GroupCode		
LocalUseFromPreID		
PreIDIndicator		
CAPALevel		
CntyDstrctCDIEP		
DemographicOnly		
AMSection504		
AMIEP		

3.1.3 STAR CST file (D<UserID>CST.txt) Data Elements

Additional information on the fields in this table may be found at <http://www.startest.org/doclibrary.html>

Field Names (first row of download file)	Description of Field	Notes:
Derived Key 1	This field will be created by the Cal-PASS validator program using an algorithm based on	

Cal-PASS Data Element Dictionary

Effective date: August 2008

Developed by Cal-PASS

	the name, date of birth and gender and may be used to match students who do not have an SSN.	
Derived Key 2	This field will be created by the Cal-PASS validator program using an algorithm based on the name, date of birth and gender and may be used to match students who do not have an SSN.	
CDS Code	The 14 digit County-District-School code issued by the California Department of Education	
Academic Year	Date range format YYYY, e.g., 0102 (for 2001 – 2002). Note: The academic year is considered Fall, Spring, and Summer.	
Local Student Identifier	Identifier used by the local district	
Statewide Student ID	Unique identification number for the student assigned to or by the first California district in which the student is enrolled in accordance with CSIS established standards.	
RecordType		
CST Math Subject		
CST Science Subject		
CST Writing		
CST English Raw Score		
CST Math Raw Score		
CST Science Raw Score		

Cal-PASS Data Element Dictionary

Effective date: August 2008

Developed by Cal-PASS

CST History Raw Score		
CST English Cluster 1		
CST English Cluster 2		
CST English Cluster 3		
CST English Cluster 4		
CST English Cluster 5		
CST English Cluster 6		
CST Math Cluster 1		
CST Math Cluster 2		
CST Math Cluster 3		
CST Math Cluster 4		
CST Math Cluster 5		
CST Math Cluster 6		
CST History Cluster 1		
CST History Cluster 2		
CST History Cluster 3		
CST History Cluster 4		
CST History Cluster 5		
CST History Cluster 6		
CST English Scaled Score		
CST Science Scaled Score		
CST History Scaled Score		
CST English Performance Level		
CST Math Performance Level		
CST Science Performance Level		

Cal-PASS Data Element Dictionary

Effective date: August 2008

Developed by Cal-PASS

CST History Performance Level		
CSTSTSIItemsAttemptELARLA		
CSTSTSIItemsAttemptMath		
CSTSTSIItemsAttemptScience		
CSTSTSIItemsAttemptHistSS		
CSTSTSIItemsAttemptWrldHist		
CSTSTSIItemsAttemptEOCScience		
CSTWritingPrompt		
CSTCAPASTSInclIndELARLA		
CSTCAPASTSInclIndMath		
CSTCAPASTSInclIndScience		
CSTCAPASTSInclIndHistSS		
CSTCAPASTSInclIndWrldHist		
CSTCAPASTSInclIndEOCScience		
CSTCAPASTSRawWrldHist		
CSTCAPASTSRawEOCScience		
CSTWrldHistRawCst1		
CSTWrldHistRawClst2		
CSTWrldHistRawClst3		
CSTWrldHistRawClst4		
CSTWrldHistRawClst5		
CSTWrldHistRawClst6		
CSTEOCRawClst1		
CSTEOCRawClst2		
CSTEOCRawClst3		

Cal-PASS Data Element Dictionary

Effective date: August 2008

Developed by Cal-PASS

CSTEOCRawClst4		
CSTEOCRawClst5		
CSTEOCRawClst6		
CSTCAPASSWrldHist		
CSTCAPASSEOC		
CSTCAPASSPerfLevelrldHist		
CSTCAPAPerfLevelEOC		

3.1.4 STAR CAT/6 file (D<UserID>CAT.txt) Data Elements

Additional information on the fields in this table may be found at <http://www.startest.org/doclibrary.html>

Field Names (first row of download file)	Description of Field	Notes:
Derived Key 1	This field will be created by the Cal-PASS validator program using an algorithm based on the name, date of birth and gender and may be used to match students who do not have an SSN.	
Derived Key 2	This field will be created by the Cal-PASS validator program using an algorithm based on the name, date of birth and gender and may be used to match students who do not have an SSN.	
CDS Code	The 14 digit County-District-School code issued by the California Department of Education	

Academic Year	Date range format YYYY, e.g., 0102 (for 2001 – 2002). Note: The academic year is considered Fall, Spring, and Summer.	
Local Student Identifier	Identifier used by the local district	
Statewide Student ID	Unique identification number for the student assigned to or by the first California district in which the student is enrolled in accordance with CSIS established standards.	
RecordType		
UIN		
Items Attempted Reading		
Items Attempted Language		
Items Attempted Spelling		
Items Attempted Math		
Items Attempted Science		
Include Indicator Read		
Include Indicator Language		
Include Indicator Spell		
Include Indicator Math		
Include Indicator Science		
Reading Raw Score		
Language Raw Score		
Spelling Raw Score		
Math Raw Score		
Science Raw Score		

Cal-PASS Data Element Dictionary

Effective date: August 2008

Developed by Cal-PASS

Reading Scaled Score		
Language Scaled Score		
Spelling Scaled Score		
Math Scaled Score		
Science Scaled Score		
Reading Percentile Rank		
Language Percentile Rank		
Spelling Percentile Rank		
Math Percentile Rank		
Science Percentile Rank		
StanineReading		
StanineLanguage		
StanineSpelling		
StanineMath		
NCEReading		
NCELanguage		
NCESpelling		
NCEMath		

3.2 CAHSEE Test Information

These files are not created by the Cal-PASS members. The Cal-PASS Validation program will prompt the user to insert the CAHSEE test results CD for the appropriate year and will extract the fields (listed below) directly from the CD. While it may appear that a great deal of fields are extracted, many of these fields are necessary in order to do a thorough analysis or may be needed to do future studies. In order to avoid having to request additional data when future studies are requested, Cal-PASS extracts a very deep dataset at the onset. Note that not all fields are part of the shareable download files. The file E<district_id>K.txt will be placed in the Output folder and is to be submitted along with the Student, Course, Award, Star and Transmittal files. Only 1 file is submitted. Data are normalized when loaded to the Cal-PASS database.

3.2.1 CHASEE Data File Download Structure

Downloading CAHSEE data: Below is the file structure for the CAHSEE Test data files when requested through the Cal-PASS download function. Note that only the fields marked with a 'Y' in the last column are included in the download.

Filenames: E<UserID>Demographics.txt
 E<UserID>English.txt
 E<UserID>Math.txt

3.2.2 CAHSEE Data Elements

Field Number	Field Name	Field Description	Format	Field Check	Integrity Check	Default Value	Table Name	Mandatory
0	YrTerm	Academic Year	X(4)	Must be an academic year in the format of '0607'			CAHSEEDemographics,CAHSEEMath,CAHSEEEnglish	YES
1	SchoolID	CDS Code	X(14)	Must be 14 characters in length and can only contain numeric characters	Must be equal to one of the 14 digit CDS school codes	00	CAHSEEDemographics,CAHSEEMath,CAHSEEEnglish	YES
2	StudentID	Student's Local District Identification Number	X(10)	Must contain a Local Student Id		XXXXXXXXXX	CAHSEEDemographics,CAHSEEMath,CAHSEEEnglish	YES

Cal-PASS Data Element Dictionary

Effective date: August 2008

Developed by Cal-PASS

3	SSIDStudentNumber	SSID Student Number	X(10)	Numeric, U or blank		"	CAHSEEDemographics	NO
4	CharterNumber	Charter Number	999	Allow blanks.		"	CAHSEEDemographics	YES
5	Grade	Grade	X(2)	Must be 10,11,12,AE,U			CAHSEEDemographics	YES
6	Lname	Student's Last Name	X(11)	Must be between 1 and 11 characters in length and can only contain alpha characters			CAHSEEDemographics	YES
7	Fname	Student's First Name	X(9)	Must be between 1 and 9 characters in length and can only contain alpha characters			CAHSEEDemographics	YES
8	Birthdate	Date of Birth	D(8)	Valid date format: CCYYMMDD, where: CCYY = the four digit calendar year MM = two digit month code: 01 - 12 DD = 01 - 31/30/29/28 Or 99999999		99999999	CAHSEEDemographics	YES
9	Gender	Gender	X(1)	Must be F,M,U,*			CAHSEEDemographics	YES
10	EthnicityPrimary	Ethnicity Primary	X(3)	Must be 600,100,201,202,203,204,205,206,207,299,400,500,301,302,303,304,399,700,999		"	CAHSEEDemographics	NO
11	EthnSecAmerIndian	American Indian or Alaska Native	X(1)	Must be Y or blank or 1		"	CAHSEEDemographics	NO
12	EthnSecFilipino	Filipino	X(1)	Must be Y or blank or 1		"	CAHSEEDemographics	NO
13	EthnSecHisp	Hispanic or Latino	X(1)	Must be Y or blank or 1		"	CAHSEEDemographics	NO
14	EthnSecAfrAmer	African American or Black (not of Hispanic	X(1)	Must be Y or blank or 1		"	CAHSEEDemographics	NO

Cal-PASS Data Element Dictionary

Effective date: August 2008

Developed by Cal-PASS

		origin)						
15	EthnSecWhite	White (not of Hispanic origin)	X(1)	Must be Y or blank or 1		"	CAHSEEDemographics	NO
16	AsianChinese	Chinese	X(1)	Must be Y or blank or 1		"	CAHSEEDemographics	NO
17	AsianJapanese	Japanese	X(1)	Must be Y or blank or 1		"	CAHSEEDemographics	NO
18	AsianKorean	Korean	X(1)	Must be Y or blank or 1		"	CAHSEEDemographics	NO
19	AsianVietnamese	Vietnamese	X(1)	Must be Y or blank or 1		"	CAHSEEDemographics	NO
20	AsianIndian	Indian	X(1)	Must be Y or blank or 1		"	CAHSEEDemographics	NO
21	AsianLaotian	Loatian	X(1)	Must be Y or blank or 1		"	CAHSEEDemographics	NO
22	AsianCambodian	Cambodian	X(1)	Must be Y or blank or 1		"	CAHSEEDemographics	NO
23	AsianOther	Other Asian	X(1)	Must be Y or blank or 1		"	CAHSEEDemographics	NO
24	PacIslanderHawaiian	Native Hawaiian	X(1)	Must be Y or blank or 1		"	CAHSEEDemographics	NO
25	PacIslanderGuamanian	Guamanian	X(1)	Must be Y or blank or 1		"	CAHSEEDemographics	NO
26	PacIslanderSamoan	Samoan	X(1)	Must be Y or blank or 1		"	CAHSEEDemographics	NO
27	PacIslanderTahitian	Tahitian	X(1)	Must be Y or blank or 1		"	CAHSEEDemographics	NO
28	PacificIslanderOther	Other Pacific Islander	X(1)	Must be Y or blank or 1		"	CAHSEEDemographics	NO
29	StudentsPrimaryLanguage	Student's Primary Language	X(2)	00-99 or U=unknown			CAHSEEDemographics	NO
30	ParentEducationLevel	Parent/Guardian Education Level	X(2)	10, 11, 12, 13, 14, 15, U or blank		"	CAHSEEDemographics	NO
31	StudentsEnglishProficiency	Student's English Proficiency	X(1)	1,2,3,4,U or blank		"	CAHSEEDemographics	NO
32	ProgPartTitleI	Title I Services	X(1)	Must be Y or blank or 1		"	CAHSEEDemographics	NO
33	ProgPartMigrant	Migrant Education	X(1)	Must be Y or blank or 1		"	CAHSEEDemographics	NO
34	ProgPartIndian	American Indian	X(1)	Must be Y or blank or 1		"	CAHSEEDemographics	NO

Cal-PASS Data Element Dictionary

Effective date: August 2008

Developed by Cal-PASS

		Education						
35	ProgPartGifted	Gifted and Talented	X(1)	Must be Y or blank or 1		"	CAHSEEDemographics	NO
36	ProgPartELD	EL in ELD - No EL	X(1)	1,2,3,4,5,6, U or blank		"	CAHSEEDemographics	NO
37	NSLP	National School Lunch Program	X(1)	Y,N,U or blank or *		"	CAHSEEDemographics	NO
38	SpecialEdDabltYCode	Disability Code for Special Education Services	X(3)	000-130 or U=unknown			CAHSEEDemographics	NO
39	SpEDNPS	Special Ed at Non-Public School	X(1)	Y or N		N	CAHSEEDemographics	NO
40	SEC504	Sec 504 Plan	X(1)	Y or blank		"	CAHSEEDemographics	NO
41	IEP	IEP	X(1)	Y or blank		"	CAHSEEDemographics	NO
42	ELAAccomTransfer	Transfer of Responses to answer document	X(1)	Y or blank		"	CAHSEEEnglish	NO
43	ELAAccomDictated MC	MC Responses Dictated	X(1)	Y or blank		"	CAHSEEEnglish	NO
44	ELAAccomWP	WP-spelling and grammar tools turned off	X(1)	Y or blank		"	CAHSEEEnglish	NO
45	ELAAccomDictated Essay	Dictated Essays student provides all spelling and language conventions	X(1)	Y or blank		"	CAHSEEEnglish	NO
46	ELAAccomAssistive device	Assistive Device - no interference with independent student work	X(1)	Y or blank		"	CAHSEEEnglish	NO
47	ELAAccomBraille	Braille Version	X(1)	Y or blank		"	CAHSEEEnglish	NO
48	ELAAccomLargePrint	Large Print	X(1)	Y or blank		"	CAHSEEEnglish	NO
49	ELAAccomExtratime	Extra Time -- beyond test day	X(1)	Y or blank		"	CAHSEEEnglish	NO
50	ELAAccomBreaks	Supervised breaks within	X(1)	Y or blank		"	CAHSEEEnglish	NO

Cal-PASS Data Element Dictionary

Effective date: August 2008

Developed by Cal-PASS

		test section						
51	ELAAccomBesttime	Test given at beneficial time of day for student	X(1)	Y or blank		"	CAHSEEEnglish	NO
52	ELAAccomHome	Home/Hospital admin.	X(1)	Y or blank		"	CAHSEEEnglish	NO
53	ELAModDictionary	Dictionary	X(2)	Y or blank or DI		"	CAHSEEEnglish	NO
54	ELAModSign	MCE or Sign Language	X(2)	Y or blank or SL		"	CAHSEEEnglish	NO
55	ELAModOralPresentation	Oral Presentation	X(1)	Y or blank		"	CAHSEEEnglish	NO
56	ELAModWPwithchecks	WP-spelling and grammar check enabled	X(1)	Y or blank		"	CAHSEEEnglish	NO
57	ELAModEssayDictated	Essay dictated, scribe provides spelling, grammar and language conventions	X(2)	Y or blank or RA		"	CAHSEEEnglish	NO
58	ELAModAssistive device	Assistive device -- interferes with independent student work	X(2)	Y or blank or AD		"	CAHSEEEnglish	NO
59	MathAccomTransfer	Transfer of Responses to answer document	X(1)	Y or blank		"	CAHSEEMath	NO
60	MathAccomDictatedMC	MC Responses Dictated	X(1)	Y or blank		"	CAHSEEMath	NO
61	MathAccomBraille	Braille Version	X(1)	Y or blank		"	CAHSEEMath	NO
62	MathAccomLargePrint	Large Print	X(1)	Y or blank		"	CAHSEEMath	NO
63	MathAccomExtratime	Extra Time -beyond day	X(1)	Y or blank		"	CAHSEEMath	NO
64	MathAccomBreaks	Supervised Breaks within sections	X(1)	Y or blank		"	CAHSEEMath	NO
65	MathAccomBesttime	Test given at Beneficial Time of Day for student	X(1)	Y or blank		"	CAHSEEMath	NO

Cal-PASS Data Element Dictionary

Effective date: August 2008

Developed by Cal-PASS

66	MathAccomHome	Home/Hospital admin.	X(1)	Y or blank		"	CAHSEEMath	NO
67	MathModDictionary	Dictionary	X(2)	Y or blank or DI		"	CAHSEEMath	NO
68	MathAccomSign	MCE or Sign Language	X(1)	Y or blank		"	CAHSEEMath	NO
69	MathAccommOral Presentation	Oral Presentation	X(2)	Y or blank or RA		"	CAHSEEMath	NO
70	MathModCalculator	Calculator Used	X(2)	Y or blank or CA		"	CAHSEEMath	NO
71	MathModTables	Arithmetic Table Used	X(2)	Y or blank or AT		"	CAHSEEMath	NO
72	MathModManipulatives	Math Manipulatives used	X(1)	Y or blank		"	CAHSEEMath	NO
73	MathModAssistive device	Assistive Device - interferes with independent student work	X(2)	Y or blank or AD		"	CAHSEEMath	NO
74	MathClassGeneral	General Math	X(2)	07-12 (grades), blank, U=unknown		"	CAHSEEMath	NO
75	MathClassPreAlgebra	Pre-Algebra	X(2)	07-12 (grades), blank, U=unknown		"	CAHSEEMath	NO
76	MathClassAlgebra 1	Algebra 1	X(2)	07-12 (grades), blank, U=unknown		"	CAHSEEMath	NO
77	MathClassGeometry	Geometry	X(2)	07-12 (grades), blank, U=unknown		"	CAHSEEMath	NO
78	MathClassAlgebra 2	Algebra 2	X(2)	07-12 (grades), blank, U=unknown		"	CAHSEEMath	NO
79	MathClassIntegMath1	Integrated Mathematics Course I	X(2)	07-12 (grades), blank, U=unknown		"	CAHSEEMath	NO
80	MathClassIntegMath2	Integrated Mathematics Course II	X(2)	07-12 (grades), blank, U=unknown		"	CAHSEEMath	NO
81	MathClassIntegMath3	Integrated Mathematics Course II	X(2)	07-12 (grades), blank, U=unknown		"	CAHSEEMath	NO

Cal-PASS Data Element Dictionary

Effective date: August 2008

Developed by Cal-PASS

82	MathClassAdvanced	Advanced Mathematics Course	X(2)	07-12 (grades), blank, U=unknown		"	CAHSEEMath	NO
83	MathTestForm	Math Test Form	99	0 -- 99 or blank		"	CAHSEEMath	NO
84	MathTestDate	Math Test Date	X(8)	Valid date format: MMDDCCYY, where: CCYY = the four digit calendar year MM = two digit month code: 01 - 12 DD = 01 - 31/30/29/28 Or 99999999		99999999	CAHSEEMath	YES
85	MathPassed	Math -- Passed/Not Passed Indicator	X(1)	A,C,E,H,I,N,P,R,X,T,Z			CAHSEEMath	NO
86	MathScaleScore	Math Scale Score	999	275-450 or blank		"	CAHSEEMath	YES
87	MathPSNumberCorrect	Math Probability & Statistics Number Correct	999	0 - 999 or blank		"	CAHSEEMath	NO
88	MathPSPercentCorrect	Math Probability & Statistics Percent Correct	999	0 - 100 or blank		"	CAHSEEMath	NO
89	MathNSNumberCorrect	Math Number Sense Correct	999	0 - 999 or blank		"	CAHSEEMath	NO
90	MathNSPercentCorrect	Math Number Sense Percent Correct	999	0 - 100 or blank		"	CAHSEEMath	NO
91	MathAFNumberCorrect	Math Algebra & Functions Number Correct	999	0 - 999 or blank		"	CAHSEEMath	NO
92	MathAFPercentCorrect	Math Algebra & Function Percent Correct	999	0 - 100 or blank		"	CAHSEEMath	NO
93	MathMGNumberCorrect	Math Measurement & Geometry Number Correct	999	0 - 999 or blank		"	CAHSEEMath	NO
94	MathMGPercentC	Math Measurement &	999	0 - 100 or blank		"	CAHSEEMath	NO

Cal-PASS Data Element Dictionary

Effective date: August 2008

Developed by Cal-PASS

	orrect	Geometry Percent Correct						
95	MathA1NumberCorrect	Math Algebra 1 Number Correct	999	0 - 999 or blank		"	CAHSEEMath	NO
96	MathA1PercentCorrect	Math Algebra 1 Percent Correct	999	0 - 100 or blank		"	CAHSEEMath	NO
97	ELATestForm	ELA Test Form	99	0 - 99 or blank		"	CAHSEEEnglish	NO
98	ELATestDate	ELA Test Date	X(8)	Valid date format: MMDDCCYY, where: CCYY = the four digit calendar year MM = two digit month code: 01 - 12 DD = 01 - 31/30/29/28 Or 99999999 of earlier years are MM/DD/YY		99999999	CAHSEEEnglish	YES
99	ELAPassed	ELA - Passed/Not Passed Indicator	X(1)	A,C,E,H,I,N,P,R,X,T,Z			CAHSEEEnglish	NO
100	ELAScaleScore	ELA Scale Score	999	250-450 or blank		"	CAHSEEEnglish	YES
101	ELARReadingWANumberCorrect	ELA Reading - Word Analysis Number Correct	999	0-999 or blank		"	CAHSEEEnglish	NO
102	ELARReadingWAPercentCorrect	ELA Reading - Word Analysis Percent Correct	999	0-100 or blank		"	CAHSEEEnglish	NO
103	ELARReadingRCNumberCorrect	ELA Reading - Reading Comprehension Number Correct	999	0-999 or blank		"	CAHSEEEnglish	NO
104	ELARReadingRCPercenCorrect	ELA Reading - Reading Comprehension Percent Correct	999	0-100 or blank		"	CAHSEEEnglish	NO
105	ELARReadingLANumberCorrect	ELA Reading - Literary Responses and Analysis Number Correct	999	0-999 or blank		"	CAHSEEEnglish	NO

Cal-PASS Data Element Dictionary

Effective date: August 2008

Developed by Cal-PASS

106	ELAReadingLAPercentCorrect	ELA Reading - Literary Responses and Analysis Percent Correct	999	0-100 or blank		"	CAHSEEEnglish	NO
107	ELAWritinWSNumberCorrect	ELA Writing - Writing Strategies Number Correct	999	0-999 or blank		"	CAHSEEEnglish	NO
108	ELAWritingWSPercentCorrect	ELA Writing - Writing Strategies Percent Correct	999	0-100 or blank		"	CAHSEEEnglish	NO
109	ELAWritingWCNumberCorrect	ELA Writing - Writing Conventions Number Correct	999	0-999 or blank		"	CAHSEEEnglish	NO
110	ELAWritingWCPercentCorrect	ELA Writing - Writing Conventions Percent Correct	999	0-100 or blank		"	CAHSEEEnglish	NO
111	ELAWritingApplicationEssay1	ELA Writing Applications - Essay Scale Score	X(3)	0.0 - 4.0 or blank		"	CAHSEEEnglish	NO
112	ParentCityStateZip	Guardian City, State, Zip	X(30)	30 characters alpha or blank		"	CAHSEEDemographics	NO
113	MathSpecVersionAudioCD	Math Spec Version Audio CD	X(2)	AC or blank		"	CAHSEEMath	NO
114	MathSpecVersionLargePrint	Math Spec Version Large Print	X(2)	LP or blank		"	CAHSEEMath	NO
115	MathSpecVersionBraille	Math Spec Version Braille	X(2)	BR or blank		"	CAHSEEMath	NO
116	ELASpecVersionAudioCD	ELA Spec Version Audio CD	X(2)	AC or blank		"	CAHSEEEnglish	NO
117	ELASpecVersionLargePrint	ELA Spec Version Large Print	X(2)	LP or blank		"	CAHSEEEnglish	NO
118	ELASpecVersionBraille	ELA Spec Version Braille	X(2)	BR or blank		"	CAHSEEEnglish	NO

Cal-PASS Data Element Dictionary

Effective date: August 2008

Developed by Cal-PASS

119	ELDateEnrolled	EL Date Enrolled	X(8)	MMDDYYYY, U or blank or YYYY		99999999	CAHSEEEnglish	NO
120	RFEPDateReclassified	RFEP Date Reclassified	X(8)	MMDDYYYY, U or blank or YYYY		99999999	CAHSEEDemographics	NO
121	RFEPStudent	RFEP Student Score Proficient 3 Years on ELA CST	X(1)	Y,N,U or blank		"	CAHSEEDemographics	NO
122	ASAMSchool	ASAM School	X(1)	Y,N		N	CAHSEEDemographics	NO
123	CAPAAssessed	CAPA School	X(1)	Y,N		N	CAHSEEDemographics	NO
124	ResidenceCountyClientCode	Residence County Client Code	X(2)	00-99, U or blank		"	CAHSEEDemographics	NO
125	TotalELAResponses	Total ELA MC Responses	999	0-79 or blank		"	CAHSEEEnglish	NO
126	TotalMathResponses	Total Math Responses	999	0-92 or blank		"	CAHSEEMath	NO
127	ELADirPrimeLang	ELA Test Directions in Primary Language	X(1)	Y or blank		"	CAHSEEEnglish	NO
128	ELASupBreaks	ELA Additional Supervised Breaks	X(1)	Y or blank			CAHSEEEnglish	NO
129	ELASepTest	ELA Tested Separately	X(1)	Y or blank			CAHSEEEnglish	NO
130	ELAGlossWL	ELA Translation Glossaries/Word Lists	X(1)	Y or blank			CAHSEEEnglish	NO
131	MathDirPrimeLang	Math Test Directions in Primary Language	X(1)	Y or blank			CAHSEEMath	NO
132	MathSupBreaks	Math Addistional Supervised Breaks	X(1)	Y or blank			CAHSEEMath	NO
133	MathSepTest	Math Tested Separately	X(1)	Y or blank			CAHSEEMath	NO
134	MathGlossWL	Math Translation Glossaries/Word lists	X(1)	Y or blank			CAHSEEMath	NO
135	ELAScoreCode	ELA Score Code	X(1)	R,S,A,E,I,Z,T,M,U,blank			CAHSEEEnglish	NO

136	MathScoreCode	Math Score Code	X(1)	R,S,A,E,I,Z,T,M,U,blank			CAHSEEMath	NO
0	YrTerm	Academic Year	X(4)	Must be an academic year in the format of '0607'			CAHSEEDemographics,CAHSEEMath,CAHSEEEnglish	YES
1	SchoolID	CDS Code	X(14)	Must be 14 characters in length and can only contain numeric characters	Must be equal to one of the 14 digit CDS school codes	00	CAHSEEDemographics,CAHSEEMath,CAHSEEEnglish	YES
2	StudentID	Student's Local District Identification Number	X(10)	Must contain a Local Student Id		XXXXXXXXXX	CAHSEEDemographics,CAHSEEMath,CAHSEEEnglish	YES
3	SSIDStudentNumber	SSID Student Number	X(10)	Numeric, U or blank		"	CAHSEEDemographics	NO
4	CharterNumber	Charter Number	999	Allow blanks.		"	CAHSEEDemographics	YES
5	Grade	Grade	X(2)	Must be 10,11,12,AE,U		U	CAHSEEDemographics	NO
6	Lname	Student's Last Name	X(11)	Must be between 1 and 11 characters in length and can only contain alpha characters			CAHSEEDemographics	YES
7	Fname	Student's First Name	X(9)	Must be between 1 and 9 characters in length and can only contain alpha characters			CAHSEEDemographics	YES
8	Birthdate	Date of Birth	D(8)	Valid date format: CCYYMMDD, where: CCYY = the four digit calendar year MM = two digit month code: 01 - 12 DD = 01 - 31/30/29/28 Or 99999999		99999999	CAHSEEDemographics	YES
9	Gender	Gender	X(1)	Must be F,M,U,*			CAHSEEDemographics	YES

Cal-PASS Data Element Dictionary

Effective date: August 2008

Developed by Cal-PASS

10	EthnicityPrimary	Ethnicity Primary	X(3)	Must be 600,100,201,202,203,204,205,206,207,299,400,500,301,302,303,304,399,700,999		"	CAHSEEDemographics	NO
11	EthnSecAmerIndian	American Indian or Alaska Native	X(1)	Must be Y or blank or 1		"	CAHSEEDemographics	NO
12	EthnSecFilipino	Filipino	X(1)	Must be Y or blank or 1		"	CAHSEEDemographics	NO
13	EthnSecHisp	Hispanic or Latino	X(1)	Must be Y or blank or 1		"	CAHSEEDemographics	NO
14	EthnSecAfrAmer	African American or Black (not of Hispanic origin)	X(1)	Must be Y or blank or 1		"	CAHSEEDemographics	NO
15	EthnSecWhite	White (not of Hispanic origin)	X(1)	Must be Y or blank or 1		"	CAHSEEDemographics	NO
16	AsianChinese	Chinese	X(1)	Must be Y or blank or 1		"	CAHSEEDemographics	NO
17	AsianJapanese	Japanese	X(1)	Must be Y or blank or 1		"	CAHSEEDemographics	NO
18	AsianKorean	Korean	X(1)	Must be Y or blank or 1		"	CAHSEEDemographics	NO
19	AsianVietnamese	Vietnamese	X(1)	Must be Y or blank or 1		"	CAHSEEDemographics	NO
20	AsianIndian	Indian	X(1)	Must be Y or blank or 1		"	CAHSEEDemographics	NO
21	AsianLaotian	Loatian	X(1)	Must be Y or blank or 1		"	CAHSEEDemographics	NO
22	AsianCambodian	Cambodian	X(1)	Must be Y or blank or 1		"	CAHSEEDemographics	NO
23	AsianOther	Other Asian	X(1)	Must be Y or blank or 1		"	CAHSEEDemographics	NO
24	PaclslanderHawaiian	Native Hawaiian	X(1)	Must be Y or blank or 1		"	CAHSEEDemographics	NO
25	PaclslanderGuamanian	Guamanian	X(1)	Must be Y or blank or 1		"	CAHSEEDemographics	NO
26	PaclslanderSamoaan	Samoaan	X(1)	Must be Y or blank or 1		"	CAHSEEDemographics	NO
27	PaclslanderTahitian	Tahitian	X(1)	Must be Y or blank or 1		"	CAHSEEDemographics	NO

28	PacificIslanderOther	Other Pacific Islander	X(1)	Must be Y or blank or 1		"	CAHSEEDemographics	NO
29	StudentsPrimaryLanguage	Student's Primary Language	X(2)	00-99 or U=unknown			CAHSEEDemographics	NO
30	ParentEducationLevel	Parent/Guardian Education Level	X(2)	10, 11, 12, 13, 14, 15, U or blank		"	CAHSEEDemographics	NO
31	StudentsEnglishProficiency	Student's English Proficiency	X(1)	1,2,3,4,U or blank		"	CAHSEEDemographics	NO
33	ProgPartMigrant	Migrant Education	X(1)	Must be Y or blank or 1		"	CAHSEEDemographics	NO
34	ProgPartIndian	American Indian Education	X(1)	Must be Y or blank or 1		"	CAHSEEDemographics	NO
35	ProgPartGifted	Gifted and Talented	X(1)	Must be Y or blank or 1		"	CAHSEEDemographics	NO
36	ProgPartELD	EL in ELD - No EL	X(1)	1,2,3,4,5,6, U or blank		"	CAHSEEDemographics	NO
37	NSLP	National School Lunch Program	X(1)	Y,N,U or blank or *		"	CAHSEEDemographics	NO
38	SpecialEdDabltCode	Disability Code for Special Education Services	X(3)	000-130 or U=unknown			CAHSEEDemographics	NO
53	ELAModDictionary	Dictionary	X(2)	Y or blank or DI		"	CAHSEEEnglish	NO
54	ELAModSign	MCE or Sign Language	X(2)	Y or blank or SL		"	CAHSEEEnglish	NO
55	ELAModOralPresentation	Oral Presentation	X(1)	Y or blank		"	CAHSEEEnglish	NO
56	ELAModWPwithchecks	WP-spelling and grammar check enabled	X(1)	Y or blank		"	CAHSEEEnglish	NO
58	ELAModAssistiveDevice	Assistive device -- interferes with independent student work	X(2)	Y or blank or AD		"	CAHSEEEnglish	NO
67	MathModDictionary	Dictionary	X(2)	Y or blank or DI		"	CAHSEEMath	NO
70	MathModCalculator	Calculator Used	X(2)	Y or blank or CA		"	CAHSEEMath	NO

Cal-PASS Data Element Dictionary

Effective date: August 2008

Developed by Cal-PASS

	or							
71	MathModTables	Arithmetic Table Used	X(2)	Y or blank or AT		"	CAHSEEMath	NO
73	MathModAssistive device	Assistive Device - interferes with independent student work	X(2)	Y or blank or AD		"	CAHSEEMath	NO
74	MathClassGeneral	General Math	X(2)	07-12 (grades), blank, U=unknown		"	CAHSEEMath	NO
75	MathClassPreAlgebra	Pre-Algebra	X(2)	07-12 (grades), blank, U=unknown		"	CAHSEEMath	NO
76	MathClassAlgebra 1	Algebra 1	X(2)	07-12 (grades), blank, U=unknown		"	CAHSEEMath	NO
77	MathClassGeometry	Geometry	X(2)	07-12 (grades), blank, U=unknown		"	CAHSEEMath	NO
78	MathClassAlgebra 2	Algebra 2	X(2)	07-12 (grades), blank, U=unknown		"	CAHSEEMath	NO
79	MathClassIntegMath1	Integrated Mathematics Course I	X(2)	07-12 (grades), blank, U=unknown		"	CAHSEEMath	NO
80	MathClassIntegMath2	Integrated Mathematics Course II	X(2)	07-12 (grades), blank, U=unknown		"	CAHSEEMath	NO
81	MathClassIntegMath3	Integrated Mathematics Course II	X(2)	07-12 (grades), blank, U=unknown		"	CAHSEEMath	NO
82	MathClassAdvanced	Advanced Mathematics Course	X(2)	07-12 (grades), blank, U=unknown		"	CAHSEEMath	NO
83	MathTestForm	Math Test Form	99	0 -- 99 or blank		"	CAHSEEMath	NO
84	MathTestDate	Math Test Date	X(8)	Valid date format: CCYYMMDD, where: CCYY = the four digit calendar year MM = two digit month code: 01 - 12 DD = 01 - 31/30/29/28		99999999	CAHSEEMath	YES

Cal-PASS Data Element Dictionary

Effective date: August 2008

Developed by Cal-PASS

				Or 99999999				
85	MathPassed	Math -- Passed/Not Passed Indicator	X(1)	A,C,E,H,I,N,P,R,X,T,Z			CAHSEEMath	NO
86	MathScaleScore	Math Scale Score	999	275-450 or blank		"	CAHSEEMath	YES
87	MathPSNumberCorrect	Math Probability & Statistics Number Correct	999	0 - 999 or blank		"	CAHSEEMath	NO
88	MathPSPercentCorrect	Math Probability & Statistics Percent Correct	999	0 - 100 or blank		"	CAHSEEMath	NO
89	MathNSNumberCorrect	Math Number Sense Correct	999	0 - 999 or blank		"	CAHSEEMath	NO
90	MathNSPercentCorrect	Math Number Sense Percent Correct	999	0 - 100 or blank		"	CAHSEEMath	NO
91	MathAFNumberCorrect	Math Algebra & Functions Number Correct	999	0 - 999 or blank		"	CAHSEEMath	NO
92	MathAFPercentCorrect	Math Algebra & Function Percent Correct	999	0 - 100 or blank		"	CAHSEEMath	NO
93	MathMGNumberCorrect	Math Measurement & Geometry Number Correct	999	0 - 999 or blank		"	CAHSEEMath	NO
94	MathMGPercentCorrect	Math Measurement & Geometry Percent Correct	999	0 - 100 or blank		"	CAHSEEMath	NO
95	MathA1NumberCorrect	Math Algebra 1 Number Correct	999	0 - 999 or blank		"	CAHSEEMath	NO
96	MathA1PercentCorrect	Math Algebra 1 Percent Correct	999	0 - 100 or blank		"	CAHSEEMath	NO
97	ELATestForm	ELA Test Form	99	0 - 99 or blank		"	CAHSEEEnglish	NO
98	ELATestDate	ELA Test Date	X(8)	Valid date format: CCYYMMDD, where:		99999999	CAHSEEEnglish	YES

Cal-PASS Data Element Dictionary

Effective date: August 2008

Developed by Cal-PASS

				CCYY = the four digit calendar year MM = two digit month code: 01 - 12 DD = 01 - 31/30/29/28 Or 99999999 of earlier years are MM/DD/YY				
99	ELAPassed	ELA - Passed/Not Passed Indicator	X(1)	A,C,E,H,I,N,P,R,X,T,Z			CAHSEEEnglish	NO
100	ELAScaleScore	ELA Scale Score	999	250-450 or blank		"	CAHSEEEnglish	YES
101	ELARReadingWANu mberCorrect	ELA Reading - Word Analysis Number Correct	999	0-999 or blank		"	CAHSEEEnglish	NO
102	ELARReadingWAPer centCorrect	ELA Reading - Word Analysis Percent Correct	999	0-100 or blank		"	CAHSEEEnglish	NO
103	ELARReadingRCNu mberCorrect	ELA Reading - Reading Comprehension Number Correct	999	0-999 or blank		"	CAHSEEEnglish	NO
104	ELARReadingRCPerc entCorrect	ELA Reading - Reading Comprehension Percent Correct	999	0-100 or blank		"	CAHSEEEnglish	NO
105	ELARReadingLANu mberCorrect	ELA Reading - Literary Responses and Analysis Number Correct	999	0-999 or blank		"	CAHSEEEnglish	NO
106	ELARReadingLAPerc entCorrect	ELA Reading - Literary Responses and Analysis Percent Correct	999	0-100 or blank		"	CAHSEEEnglish	NO
107	ELAWritinWSNum berCorrect	ELA Writing - Writing Strategies Number Correct	999	0-999 or blank		"	CAHSEEEnglish	NO
108	ELAWritingWSPerc entCorrect	ELA Writing - Writing Strategies Percent Correct	999	0-100 or blank		"	CAHSEEEnglish	NO

Cal-PASS Data Element Dictionary

Effective date: August 2008

Developed by Cal-PASS

109	ELAWritingWCNumberCorrect	ELA Writing - Writing Conventions Number Correct	999	0-999 or blank		"	CAHSEEEnglish	NO
110	ELAWritingWCPercentCorrect	ELA Writing - Writing Conventions Percent Correct	999	0-100 or blank		"	CAHSEEEnglish	NO
111	ELAWritingApplicationsEssay1	ELA Writing Applications - Essay Scale Score	X(3)	0.0 - 4.0 or blank		"	CAHSEEEnglish	NO
112	ParentCityStateZip	Guardian City, State, Zip	X(30)	30 characters alpha or blank		"	CAHSEEDemographics	NO
113	MathSpecVersionAudioCD	Math Spec Version Audio CD	X(2)	AC or blank		"	CAHSEEMath	NO
114	MathSpecVersionLargePrint	Math Spec Version Large Print	X(2)	LP or blank		"	CAHSEEMath	NO
115	MathSpecVersionBraille	Math Spec Version Braille	X(2)	BR or blank		"	CAHSEEMath	NO
116	ELASpecVersionAudioCD	ELA Spec Version Audio CD	X(2)	AC or blank		"	CAHSEEEnglish	NO
117	ELASpecVersionLargePrint	ELA Spec Version Large Print	X(2)	LP or blank		"	CAHSEEEnglish	NO
118	ELASpecVersionBraille	ELA Spec Version Braille	X(2)	BR or blank		"	CAHSEEEnglish	NO
119	ELDateEnrolled	EL Date Enrolled	X(8)	CCYYMMDD, U or blank or YYYY		99999999	CAHSEEEnglish	NO
120	RFEPDateReclassified	RFEP Date Reclassified	X(8)	CCYYMMDD, U or blank or YYYY		99999999	CAHSEEDemographics	NO
121	RFEPStudent	RFEP Student Score Proficient 3 Years on ELA CST	X(1)	Y,N,U or blank		"	CAHSEEDemographics	NO
122	ASAMSchool	ASAM School	X(1)	Y,N		N	CAHSEEDemographics	NO
123	CAPAAssessed	CAPA School	X(1)	Y,N		N	CAHSEEDemographics	NO

Cal-PASS Data Element Dictionary

Effective date: August 2008

Developed by Cal-PASS

0	YrTerm	Academic Year	X(4)	Must be an academic year in the format of '0607'			CAHSEEDemographics,CAHSEEMath,CAHSEEEnglish	YES
1	SchoolID	CDS Code	X(14)	Must be 14 characters in length and can only contain numeric characters	Must be equal to one of the 14 digit CDS school codes	00	CAHSEEDemographics,CAHSEEMath,CAHSEEEnglish	YES
2	StudentID	Student's Local District Identification Number	X(10)	Must contain a Local Student Id		XXXXXXXXXX	CAHSEEDemographics,CAHSEEMath,CAHSEEEnglish	YES
3	SSIDStudentNumber	SSID Student Number	X(10)	Numeric, U or blank		"	CAHSEEDemographics	NO
4	CharterNumber	Charter Number	999	Allow blanks.		"	CAHSEEDemographics	YES
5	Grade	Grade	X(2)	Must be 10,11,12,AE,U		U	CAHSEEDemographics	NO
6	Lname	Student's Last Name	X(11)	Must be between 1 and 11 characters in length and can only contain alpha characters			CAHSEEDemographics	YES
7	Fname	Student's First Name	X(9)	Must be between 1 and 9 characters in length and can only contain alpha characters			CAHSEEDemographics	YES
8	Birthdate	Date of Birth	D(8)	Valid date format: CCYYMMDD, where: CCYY = the four digit calendar year MM = two digit month code: 01 - 12 DD = 01 - 31/30/29/28 Or 99999999		99999999	CAHSEEDemographics	YES
9	Gender	Gender	X(1)	Must be F,M,U,*			CAHSEEDemographics	YES
10	EthnicityPrimary	Ethnicity Primary	X(3)	Must be		"	CAHSEEDemographics	NO

Cal-PASS Data Element Dictionary

Effective date: August 2008

Developed by Cal-PASS

				600,100,201,202,203,204,205,206,207,299,400,500,301,302,303,304,399,700,999				
11	EthnSecAmerIndian	American Indian or Alaska Native	X(1)	Must be Y or blank or 1		"	CAHSEEDemographics	NO
12	EthnSecFilipino	Filipino	X(1)	Must be Y or blank or 1		"	CAHSEEDemographics	NO
13	EthnSecHisp	Hispanic or Latino	X(1)	Must be Y or blank or 1		"	CAHSEEDemographics	NO
14	EthnSecAfrAmer	African American or Black (not of Hispanic origin)	X(1)	Must be Y or blank or 1		"	CAHSEEDemographics	NO
15	EthnSecWhite	White (not of Hispanic origin)	X(1)	Must be Y or blank or 1		"	CAHSEEDemographics	NO
16	AsianChinese	Chinese	X(1)	Must be Y or blank or 1		"	CAHSEEDemographics	NO
17	AsianJapanese	Japanese	X(1)	Must be Y or blank or 1		"	CAHSEEDemographics	NO
18	AsianKorean	Korean	X(1)	Must be Y or blank or 1		"	CAHSEEDemographics	NO
19	AsianVietnamese	Vietnamese	X(1)	Must be Y or blank or 1		"	CAHSEEDemographics	NO
20	AsianIndian	Indian	X(1)	Must be Y or blank or 1		"	CAHSEEDemographics	NO
21	AsianLaotian	Loatian	X(1)	Must be Y or blank or 1		"	CAHSEEDemographics	NO
22	AsianCambodian	Cambodian	X(1)	Must be Y or blank or 1		"	CAHSEEDemographics	NO
23	AsianOther	Other Asian	X(1)	Must be Y or blank or 1		"	CAHSEEDemographics	NO
24	PacIslanderHawaiian	Native Hawaiian	X(1)	Must be Y or blank or 1		"	CAHSEEDemographics	NO
25	PacIslanderGuamanian	Guamanian	X(1)	Must be Y or blank or 1		"	CAHSEEDemographics	NO
26	PacIslanderSamoaan	Samoan	X(1)	Must be Y or blank or 1		"	CAHSEEDemographics	NO
27	PacIslanderTahitian	Tahitian	X(1)	Must be Y or blank or 1		"	CAHSEEDemographics	NO
28	PacificIslanderOth	Other Pacific Islander	X(1)	Must be Y or blank or 1		"	CAHSEEDemographics	NO

	er							
29	StudentsPrimaryLanguage	Student's Primary Language	X(2)	00-99 or U=unknown			CAHSEEDemographics	NO
30	ParentEducationLevel	Parent/Guardian Education Level	X(2)	10, 11, 12, 13, 14, 15, U or blank		"	CAHSEEDemographics	NO
31	StudentsEnglishProficiency	Student's English Proficiency	X(1)	1,2,3,4,U or blank		"	CAHSEEDemographics	NO
33	ProgPartMigrant	Migrant Education	X(1)	Must be Y or blank or 1		"	CAHSEEDemographics	NO
34	ProgPartIndian	American Indian Education	X(1)	Must be Y or blank or 1		"	CAHSEEDemographics	NO
35	ProgPartGifted	Gifted and Talented	X(1)	Must be Y or blank or 1		"	CAHSEEDemographics	NO
36	ProgPartELD	EL in ELD - No EL	X(1)	1,2,3,4,5,6, U or blank		"	CAHSEEDemographics	NO
37	NSLP	National School Lunch Program	X(1)	Y,N,U or blank or *		"	CAHSEEDemographics	NO
38	SpecialEdDabtyCode	Disability Code for Special Education Services	X(3)	000-130 or U=unknown			CAHSEEDemographics	NO
53	ELAModDictionary	Dictionary	X(2)	Y or blank or DI		"	CAHSEEEnglish	NO
55	ELAModOralPresentation	Oral Presentation	X(1)	Y or blank		"	CAHSEEEnglish	NO
56	ELAModWPwithchecks	WP-spelling and grammar check enabled	X(1)	Y or blank		"	CAHSEEEnglish	NO
67	MathModDictionary	Dictionary	X(2)	Y or blank or DI		"	CAHSEEMath	NO
70	MathModCalculator	Calculator Used	X(2)	Y or blank or CA		"	CAHSEEMath	NO
71	MathModTables	Arithmetic Table Used	X(2)	Y or blank or AT		"	CAHSEEMath	NO
74	MathClassGeneral	General Math	X(2)	07-12 (grades), blank, U=unknown		"	CAHSEEMath	NO
75	MathClassPreAlge	Pre-Algebra	X(2)	07-12 (grades), blank,		"	CAHSEEMath	NO

Cal-PASS Data Element Dictionary

Effective date: August 2008

Developed by Cal-PASS

	bra			U=unknown				
76	MathClassAlgebra1	Algebra 1	X(2)	07-12 (grades), blank, U=unknown		"	CAHSEEMath	NO
77	MathClassGeometry	Geometry	X(2)	07-12 (grades), blank, U=unknown		"	CAHSEEMath	NO
78	MathClassAlgebra2	Algebra 2	X(2)	07-12 (grades), blank, U=unknown		"	CAHSEEMath	NO
79	MathClassIntegMath1	Integrated Mathematics Course I	X(2)	07-12 (grades), blank, U=unknown		"	CAHSEEMath	NO
80	MathClassIntegMath2	Integrated Mathematics Course II	X(2)	07-12 (grades), blank, U=unknown		"	CAHSEEMath	NO
81	MathClassIntegMath3	Integrated Mathematics Course II	X(2)	07-12 (grades), blank, U=unknown		"	CAHSEEMath	NO
82	MathClassAdvanced	Advanced Mathematics Course	X(2)	07-12 (grades), blank, U=unknown		"	CAHSEEMath	NO
83	MathTestForm	Math Test Form	99	0 -- 99 or blank		"	CAHSEEMath	NO
84	MathTestDate	Math Test Date	X(8)	Valid date format: CCYYMMDD where: CCYY = the four digit calendar year MM = two digit month code: 01 - 12 DD = 01 - 31/30/29/28 Or 99999999		99999999	CAHSEEMath	YES
85	MathPassed	Math -- Passed/Not Passed Indicator	X(1)	A,C,E,H,I,N,P,R,X,T,Z			CAHSEEMath	NO
86	MathScaleScore	Math Scale Score	999	275-450 or blank		"	CAHSEEMath	YES
87	MathPSNumberCorrect	Math Probability & Statistics Number Correct	999	0 - 999 or blank		"	CAHSEEMath	NO
88	MathPSPercentCorrect	Math Probability & Statistics Percent Correct	999	0 - 100 or blank		"	CAHSEEMath	NO

Cal-PASS Data Element Dictionary

Effective date: August 2008

Developed by Cal-PASS

89	MathNSNumberCorrect	Math Number Sense Correct	999	0 - 999 or blank		"	CAHSEEMath	NO
90	MathNSPercentCorrect	Math Number Sense Percent Correct	999	0 - 100 or blank		"	CAHSEEMath	NO
91	MathAFNumberCorrect	Math Algebra & Functions Number Correct	999	0 - 999 or blank		"	CAHSEEMath	NO
92	MathAFPercentCorrect	Math Algebra & Function Percent Correct	999	0 - 100 or blank		"	CAHSEEMath	NO
93	MathMGNumberCorrect	Math Measurement & Geometry Number Correct	999	0 - 999 or blank		"	CAHSEEMath	NO
94	MathMGPercentCorrect	Math Measurement & Geometry Percent Correct	999	0 - 100 or blank		"	CAHSEEMath	NO
95	MathA1NumberCorrect	Math Algebra 1 Number Correct	999	0 - 999 or blank		"	CAHSEEMath	NO
96	MathA1PercentCorrect	Math Algebra 1 Percent Correct	999	0 - 100 or blank		"	CAHSEEMath	NO
97	ELATestForm	ELA Test Form	99	0 - 99 or blank		"	CAHSEEEnglish	NO
98	ELATestDate	ELA Test Date	X(8)	Valid date format: CCYYMMDD, where: CCYY = the four digit calendar year MM = two digit month code: 01 - 12 DD = 01 - 31/30/29/28 Or 99999999 of earlier years are MM/DD/YY		99999999	CAHSEEEnglish	YES
99	ELAPassed	ELA - Passed/Not Passed Indicator	X(1)	A,C,E,H,I,N,P,R,X,T,Z			CAHSEEEnglish	NO
100	ELAScaleScore	ELA Scale Score	999	250-450 or blank		"	CAHSEEEnglish	YES

Cal-PASS Data Element Dictionary

Effective date: August 2008

Developed by Cal-PASS

101	ELARReadingWANu mberCorrect	ELA Reading - Word Analysis Number Correct	999	0-999 or blank		"	CAHSEEEnglish	NO
102	ELARReadingWAPer centCorrect	ELA Reading - Word Analysis Percent Correct	999	0-100 or blank		"	CAHSEEEnglish	NO
103	ELARReadingRCNu mberCorrect	ELA Reading - Reading Comprehension Number Correct	999	0-999 or blank		"	CAHSEEEnglish	NO
104	ELARReadingRCPer centCorrect	ELA Reading - Reading Comprehension Percent Correct	999	0-100 or blank		"	CAHSEEEnglish	NO
105	ELARReadingLANu mberCorrect	ELA Reading - Literary Responses and Analysis Number Correct	999	0-999 or blank		"	CAHSEEEnglish	NO
106	ELARReadingLAPer centCorrect	ELA Reading - Literary Responses and Analysis Percent Correct	999	0-100 or blank		"	CAHSEEEnglish	NO
107	ELAWritinWSNum berCorrect	ELA Writing - Writing Strategies Number Correct	999	0-999 or blank		"	CAHSEEEnglish	NO
108	ELAWritingWSPer centCorrect	ELA Writing - Writing Strategies Percent Correct	999	0-100 or blank		"	CAHSEEEnglish	NO
109	ELAWritingWCNu mberCorrect	ELA Writing - Writing Conventions Number Correct	999	0-999 or blank		"	CAHSEEEnglish	NO
110	ELAWritingWCPer centCorrect	ELA Writing - Writing Conventions Percent Correct	999	0-100 or blank		"	CAHSEEEnglish	NO
111	ELAWritingApplicE ssay1	ELA Writing Applications - Essay Scale Score	X(3)	0.0 - 4.0 or blank		"	CAHSEEEnglish	NO
112	ParentCityStateZip	Guardian City, State, Zip	X(30)	30 characters alpha or		"	CAHSEEDemographics	NO

Cal-PASS Data Element Dictionary

Effective date: August 2008

Developed by Cal-PASS

				blank				
113	MathSpecVersionAudioCD	Math Spec Version Audio CD	X(2)	AC or blank		"	CAHSEEMath	NO
114	MathSpecVersionLargePrint	Math Spec Version Large Print	X(2)	LP or blank		"	CAHSEEMath	NO
115	MathSpecVersionBraille	Math Spec Version Braille	X(2)	BR or blank		"	CAHSEEMath	NO
116	ELASpecVersionAudioCD	ELA Spec Version Audio CD	X(2)	AC or blank		"	CAHSEEEnglish	NO
117	ELASpecVersionLargePrint	ELA Spec Version Large Print	X(2)	LP or blank		"	CAHSEEEnglish	NO
118	ELASpecVersionBraille	ELA Spec Version Braille	X(2)	BR or blank		"	CAHSEEEnglish	NO
119	ELDateEnrolled	EL Date Enrolled	X(8)	CCYYMMDD, U or blank or YYYY		99999999	CAHSEEEnglish	NO
120	RFEPDateReclassified	RFEP Date Reclassified	X(8)	CCYYMMDD, U or blank or YYYY		99999999	CAHSEEDemographics	NO
121	RFEPStudent	RFEP Student Score Proficient 3 Years on ELA CST	X(1)	Y,N,U or blank		"	CAHSEEDemographics	NO
122	ASAMSchool	ASAM School	X(1)	Y,N		N	CAHSEEDemographics	NO
123	CAPAAssessed	CAPA School	X(1)	Y,N		N	CAHSEEDemographics	NO
124	ResidenceCountyClientCode	Residence County Client Code	X(2)	00-99, U or blank		"	CAHSEEDemographics	NO
125	TotalELAResponses	Total ELA MC Responses	999	0-79 or blank		"	CAHSEEEnglish	NO
126	TotalMathResponses	Total Math Responses	999	0-92 or blank		"	CAHSEEMath	NO
0	YrTerm	Academic Year	X(4)	Must be an academic year in the format of '0607'			CAHSEEDemographics,CAHSEEMath,CAHSEEEnglish	YES

Cal-PASS Data Element Dictionary

Effective date: August 2008

Developed by Cal-PASS

1	SchoolID	CDS Code	X(14)	Must be 14 characters in length and can only contain numeric characters	Must be equal to one of the 14 digit CDS school codes	00	CAHSEEDemographics,CAHSEEMath,CAHSEEEnglish	YES
2	StudentID	Student's Local District Identification Number	X(10)	Must contain a Local Student Id		XXXXXXXXXX	CAHSEEDemographics,CAHSEEMath,CAHSEEEnglish	YES
3	SSIDStudentNumber	SSID Student Number	X(10)	Numeric, U or blank		"	CAHSEEDemographics	NO
4	CharterNumber	Charter Number	999	Allow blanks.		"	CAHSEEDemographics	YES
5	Grade	Grade	X(2)	Must be 10,11,12,AE,U		U	CAHSEEDemographics	NO
6	Lname	Student's Last Name	X(11)	Must be between 1 and 11 characters in length and can only contain alpha characters			CAHSEEDemographics	YES
7	Fname	Student's First Name	X(9)	Must be between 1 and 9 characters in length and can only contain alpha characters			CAHSEEDemographics	YES
8	Birthdate	Date of Birth	D(8)	Valid date format: CCYYMMDD, where: CCYY = the four digit calendar year MM = two digit month code: 01 - 12 DD = 01 - 31/30/29/28 Or 99999999		99999999	CAHSEEDemographics	YES
9	Gender	Gender	X(1)	Must be F,M,U,*			CAHSEEDemographics	YES
10	EthnicityPrimary	Ethnicity Primary	X(3)	Must be 600,100,201,202,203,204,205,206,207,299,400,500,301,302,303,304,399,7		"	CAHSEEDemographics	NO

Cal-PASS Data Element Dictionary

Effective date: August 2008

Developed by Cal-PASS

				00,999				
11	EthnSecAmerIndian	American Indian or Alaska Native	X(1)	Must be Y or blank or 1		"	CAHSEEDemographics	NO
12	EthnSecFilipino	Filipino	X(1)	Must be Y or blank or 1		"	CAHSEEDemographics	NO
13	EthnSecHisp	Hispanic or Latino	X(1)	Must be Y or blank or 1		"	CAHSEEDemographics	NO
14	EthnSecAfrAmer	African American or Black (not of Hispanic origin)	X(1)	Must be Y or blank or 1		"	CAHSEEDemographics	NO
15	EthnSecWhite	White (not of Hispanic origin)	X(1)	Must be Y or blank or 1		"	CAHSEEDemographics	NO
16	AsianChinese	Chinese	X(1)	Must be Y or blank or 1		"	CAHSEEDemographics	NO
17	AsianJapanese	Japanese	X(1)	Must be Y or blank or 1		"	CAHSEEDemographics	NO
18	AsianKorean	Korean	X(1)	Must be Y or blank or 1		"	CAHSEEDemographics	NO
19	AsianVietnamese	Vietnamese	X(1)	Must be Y or blank or 1		"	CAHSEEDemographics	NO
20	AsianIndian	Indian	X(1)	Must be Y or blank or 1		"	CAHSEEDemographics	NO
21	AsianLaotian	Loatian	X(1)	Must be Y or blank or 1		"	CAHSEEDemographics	NO
22	AsianCambodian	Cambodian	X(1)	Must be Y or blank or 1		"	CAHSEEDemographics	NO
23	AsianOther	Other Asian	X(1)	Must be Y or blank or 1		"	CAHSEEDemographics	NO
24	PacIslanderHawaiian	Native Hawaiian	X(1)	Must be Y or blank or 1		"	CAHSEEDemographics	NO
25	PacIslanderGuamanian	Guamanian	X(1)	Must be Y or blank or 1		"	CAHSEEDemographics	NO
26	PacIslanderSamoaan	Samoan	X(1)	Must be Y or blank or 1		"	CAHSEEDemographics	NO
27	PacIslanderTahitian	Tahitian	X(1)	Must be Y or blank or 1		"	CAHSEEDemographics	NO
28	PacificIslanderOther	Other Pacific Islander	X(1)	Must be Y or blank or 1		"	CAHSEEDemographics	NO
29	StudentsPrimaryLanguage	Student's Primary Language	X(2)	00-99 or U=unknown			CAHSEEDemographics	NO

30	ParentEducationLevel	Parent/Guardian Education Level	X(2)	10, 11, 12, 13, 14, 15, U or blank		"	CAHSEEDemographics	NO
31	StudentsEnglishProficiency	Student's English Proficiency	X(1)	1,2,3,4,U or blank		"	CAHSEEDemographics	NO
32	ProgPartTitle	Title I Services	X(1)	Must be Y or blank or 1		"	CAHSEEDemographics	NO
33	ProgPartMigrant	Migrant Education	X(1)	Must be Y or blank or 1		"	CAHSEEDemographics	NO
34	ProgPartIndian	American Indian Education	X(1)	Must be Y or blank or 1		"	CAHSEEDemographics	NO
35	ProgPartGifted	Gifted and Talented	X(1)	Must be Y or blank or 1		"	CAHSEEDemographics	NO
36	ProgPartELD	EL in ELD - No EL	X(1)	1,2,3,4,5,6, U or blank		"	CAHSEEDemographics	NO
37	NSLP	National School Lunch Program	X(1)	Y,N,U or blank or *		"	CAHSEEDemographics	NO
38	SpecialEdDabltCode	Disability Code for Special Education Services	X(3)	000-130 or U=unknown			CAHSEEDemographics	NO
39	SpEDNPS	Special Ed at Non-Public School	X(1)	Y or N		N	CAHSEEDemographics	NO
40	SEC504	Sec 504 Plan	X(1)	Y or blank		"	CAHSEEDemographics	NO
41	IEP	IEP	X(1)	Y or blank		"	CAHSEEDemographics	NO
42	ELAAccomTransfer	Transfer of Responses to answer document	X(1)	Y or blank		"	CAHSEEEnglish	NO
43	ELAAccomDictated MC	MC Responses Dictated	X(1)	Y or blank		"	CAHSEEEnglish	NO
44	ELAccomWP	WP-spelling and grammar tools turned off	X(1)	Y or blank		"	CAHSEEEnglish	NO
45	ELAAccomDictated Essay	Dictated Essays student provides all spelling and language conventions	X(1)	Y or blank		"	CAHSEEEnglish	NO
46	ELAAccomAssistive device	Assistive Device - no interference with independent student	X(1)	Y or blank		"	CAHSEEEnglish	NO

Cal-PASS Data Element Dictionary

Effective date: August 2008

Developed by Cal-PASS

		work						
47	ELAAccomBraille	Braille Version	X(1)	Y or blank		"	CAHSEEEnglish	NO
48	ELAAccomLargePrint	Large Print	X(1)	Y or blank		"	CAHSEEEnglish	NO
49	ELAAccomExtratime	Extra Time -- beyond test day	X(1)	Y or blank		"	CAHSEEEnglish	NO
50	ELAAccomBreaks	Supervised breaks within test section	X(1)	Y or blank		"	CAHSEEEnglish	NO
51	ELAAccomBesttime	Test given at beneficial time of day for student	X(1)	Y or blank		"	CAHSEEEnglish	NO
52	ELAAccomHome	Home/Hospital admin.	X(1)	Y or blank		"	CAHSEEEnglish	NO
53	ELAModDictionary	Dictionary	X(2)	Y or blank or DI		"	CAHSEEEnglish	NO
54	ELAModSign	MCE or Sign Language	X(2)	Y or blank or SL		"	CAHSEEEnglish	NO
55	ELAModOralPresentation	Oral Presentation	X(1)	Y or blank		"	CAHSEEEnglish	NO
56	ELAModWPwithchecks	WP-spelling and grammar check enabled	X(1)	Y or blank		"	CAHSEEEnglish	NO
57	ELAModEssayDictated	Essay dictated, scribe provides spelling, grammar and language conventions	X(2)	Y or blank or RA		"	CAHSEEEnglish	NO
58	ELAModAssistive device	Assistive device -- interferes with independent student work	X(2)	Y or blank or AD		"	CAHSEEEnglish	NO
59	MathAccomTransfer	Transfer of Responses to answer document	X(1)	Y or blank		"	CAHSEEMath	NO
60	MathAccomDictatedMC	MC Responses Dictated	X(1)	Y or blank		"	CAHSEEMath	NO
61	MathAccomBraille	Braille Version	X(1)	Y or blank		"	CAHSEEMath	NO
62	MathAccomLargeP	Large Print	X(1)	Y or blank		"	CAHSEEMath	NO

Cal-PASS Data Element Dictionary

Effective date: August 2008

Developed by Cal-PASS

	rint							
63	MathAccomExtrati me	Extra Time -beyond day	X(1)	Y or blank		"	CAHSEEMath	NO
64	MathAccomBreaks	Supervised Breaks within sections	X(1)	Y or blank		"	CAHSEEMath	NO
65	MathAccomBestti me	Test given at Beneficial Time of Day for student	X(1)	Y or blank		"	CAHSEEMath	NO
66	MathAccomHome	Home/Hospital admin.	X(1)	Y or blank		"	CAHSEEMath	NO
67	MathModDictiona ry	Dictionary	X(2)	Y or blank or DI		"	CAHSEEMath	NO
68	MathAccomSign	MCE or Sign Language	X(1)	Y or blank		"	CAHSEEMath	NO
69	MathAccommOral Presentation	Oral Presentation	X(2)	Y or blank or RA		"	CAHSEEMath	NO
70	MathModCalculat or	Calculator Used	X(2)	Y or blank or CA		"	CAHSEEMath	NO
71	MathModTables	Arithmetic Table Used	X(2)	Y or blank or AT		"	CAHSEEMath	NO
72	MathModManipul atives	Math Manipulatives used	X(1)	Y or blank		"	CAHSEEMath	NO
73	MathModAssistive device	Assistive Device - interferes with independent student work	X(2)	Y or blank or AD		"	CAHSEEMath	NO
74	MathClassGeneral	General Math	X(2)	07-12 (grades), blank, U=unknown		"	CAHSEEMath	NO
75	MathClassPreAlge bra	Pre-Algebra	X(2)	07-12 (grades), blank, U=unknown		"	CAHSEEMath	NO
76	MathClassAlgebra 1	Algebra 1	X(2)	07-12 (grades), blank, U=unknown		"	CAHSEEMath	NO
77	MathClassGeomet ry	Geometry	X(2)	07-12 (grades), blank, U=unknown		"	CAHSEEMath	NO
78	MathClassAlgebra	Algebra 2	X(2)	07-12 (grades), blank,		"	CAHSEEMath	NO

Cal-PASS Data Element Dictionary

Effective date: August 2008

Developed by Cal-PASS

	2			U=unknown				
79	MathClassIntegMath1	Integrated Mathematics Course I	X(2)	07-12 (grades), blank, U=unknown		"	CAHSEEMath	NO
80	MathClassIntegMath2	Integrated Mathematics Course II	X(2)	07-12 (grades), blank, U=unknown		"	CAHSEEMath	NO
81	MathClassIntegMath3	Integrated Mathematics Course II	X(2)	07-12 (grades), blank, U=unknown		"	CAHSEEMath	NO
82	MathClassAdvanced	Advanced Mathematics Course	X(2)	07-12 (grades), blank, U=unknown		"	CAHSEEMath	NO
83	MathTestForm	Math Test Form	99	0 -- 99 or blank		"	CAHSEEMath	NO
84	MathTestDate	Math Test Date	X(8)	Valid date format: CCYYMMDD, where: CCYY = the four digit calendar year MM = two digit month code: 01 - 12 DD = 01 - 31/30/29/28 Or 99999999		99999999	CAHSEEMath	YES
85	MathPassed	Math -- Passed/Not Passed Indicator	X(1)	A,C,E,H,I,N,P,R,X,T,Z			CAHSEEMath	NO
86	MathScaleScore	Math Scale Score	999	275-450 or blank		"	CAHSEEMath	YES
87	MathPSNumberCorrect	Math Probability & Statistics Number Correct	999	0 - 999 or blank		"	CAHSEEMath	NO
88	MathPSPercentCorrect	Math Probability & Statistics Percent Correct	999	0 - 100 or blank		"	CAHSEEMath	NO
89	MathNSNumberCorrect	Math Number Sense Correct	999	0 - 999 or blank		"	CAHSEEMath	NO
90	MathNSPercentCorrect	Math Number Sense Percent Correct	999	0 - 100 or blank		"	CAHSEEMath	NO
91	MathAFNumberCorrect	Math Algebra & Functions Number	999	0 - 999 or blank		"	CAHSEEMath	NO

Cal-PASS Data Element Dictionary

Effective date: August 2008

Developed by Cal-PASS

		Correct						
92	MathAFPercentCorrect	Math Algebra & Function Percent Correct	999	0 - 100 or blank		"	CAHSEEMath	NO
93	MathMGNumberCorrect	Math Measurement & Geometry Number Correct	999	0 - 999 or blank		"	CAHSEEMath	NO
94	MathMGPercentCorrect	Math Measurement & Geometry Percent Correct	999	0 - 100 or blank		"	CAHSEEMath	NO
95	MathA1NumberCorrect	Math Algebra 1 Number Correct	999	0 - 999 or blank		"	CAHSEEMath	NO
96	MathA1PercentCorrect	Math Algebra 1 Percent Correct	999	0 - 100 or blank		"	CAHSEEMath	NO
97	ELATestForm	ELA Test Form	99	0 - 99 or blank		"	CAHSEEEnglish	NO
98	ELATestDate	ELA Test Date	X(8)	Valid date format: CCYYMMDD, where: CCYY = the four digit calendar year MM = two digit month code: 01 - 12 DD = 01 - 31/30/29/28 Or 99999999 of earlier years are MM/DD/YY		99999999	CAHSEEEnglish	YES
99	ELAPassed	ELA - Passed/Not Passed Indicator	X(1)	A,C,E,H,I,N,P,R,X,T,Z			CAHSEEEnglish	NO
100	ELAScaleScore	ELA Scale Score	999	250-450 or blank		"	CAHSEEEnglish	YES
101	ELARReadingWANumberCorrect	ELA Reading - Word Analysis Number Correct	999	0-999 or blank		"	CAHSEEEnglish	NO
102	ELARReadingWAPercentCorrect	ELA Reading - Word Analysis Percent Correct	999	0-100 or blank		"	CAHSEEEnglish	NO
103	ELARReadingRCNumberCorrect	ELA Reading - Reading Comprehension Number	999	0-999 or blank		"	CAHSEEEnglish	NO

Cal-PASS Data Element Dictionary

Effective date: August 2008

Developed by Cal-PASS

		Correct						
104	ELARReadingRCPerc entCorrect	ELA Reading - Reading Comprehension Percent Correct	999	0-100 or blank		"	CAHSEEEnglish	NO
105	ELARReadingLANum berCorrect	ELA Reading - Literary Responses and Analysis Number Correct	999	0-999 or blank		"	CAHSEEEnglish	NO
106	ELARReadingLAPerc entCorrect	ELA Reading - Literary Responses and Analysis Percent Correct	999	0-100 or blank		"	CAHSEEEnglish	NO
107	ELAWritinWNum berCorrect	ELA Writing - Writing Strategies Number Correct	999	0-999 or blank		"	CAHSEEEnglish	NO
108	ELAWritingWSPerc entCorrect	ELA Writing - Writing Strategies Percent Correct	999	0-100 or blank		"	CAHSEEEnglish	NO
109	ELAWritingWCNu mberCorrect	ELA Writing - Writing Conventions Number Correct	999	0-999 or blank		"	CAHSEEEnglish	NO
110	ELAWritingWCPer centCorrect	ELA Writing - Writing Conventions Percent Correct	999	0-100 or blank		"	CAHSEEEnglish	NO
111	ELAWritingApplicE ssay1	ELA Writing Applications - Essay Scale Score	X(3)	0.0 - 4.0 or blank		"	CAHSEEEnglish	NO
112	ParentCityStateZip	Guardian City, State, Zip	X(30)	30 characters alpha or blank		"	CAHSEEDemographics	NO
113	MathSpecVersionA udioCD	Math Spec Version Audio CD	X(2)	AC or blank		"	CAHSEEMath	NO
114	MathSpecVersionL argePrint	Math Spec Version Large Print	X(2)	LP or blank		"	CAHSEEMath	NO
115	MathSpecVersionB	Math Spec Version	X(2)	BR or blank		"	CAHSEEMath	NO

Cal-PASS Data Element Dictionary

Effective date: August 2008

Developed by Cal-PASS

	raille	Braille						
116	ELASpecVersionAudioCD	ELA Spec Version Audio CD	X(2)	AC or blank		"	CAHSEEEnglish	NO
117	ELASpecVersionLargePrint	ELA Spec Version Large Print	X(2)	LP or blank		"	CAHSEEEnglish	NO
118	ELASpecVersionBraille	ELA Spec Version Braille	X(2)	BR or blank		"	CAHSEEEnglish	NO
119	ELDateEnrolled	EL Date Enrolled	X(8)	CCYYMMDD, U or blank		99999999	CAHSEEEnglish	NO
120	RFEPDateReclassified	RFEP Date Reclassified	X(8)	CCYYMMDD, U or blank		99999999	CAHSEEDemographics	NO
121	RFEPStudent	RFEP Student Score Proficient 3 Years on ELA CST	X(1)	Y,N,U or blank		"	CAHSEEDemographics	NO
122	ASAMSchool	ASAM School	X(1)	Y,N		N	CAHSEEDemographics	NO
123	CAPAAssessed	CAPA School	X(1)	Y,N		N	CAHSEEDemographics	NO
124	ResidenceCountyClientCode	Residence County Client Code	X(2)	00-99, U or blank		"	CAHSEEDemographics	NO
125	TotalELAResponses	Total ELA MC Responses	999	0-79 or blank		"	CAHSEEEnglish	NO
126	TotalMathResponses	Total Math Responses	999	0-92 or blank		"	CAHSEEMath	NO
127	ELADirPrimeLang	ELA Test Directions in Primary Language	X(1)	Y or blank		"	CAHSEEEnglish	NO
128	ELASupBreaks	ELA Additional Supervised Breaks	X(1)	Y or blank			CAHSEEEnglish	NO
129	ELASepTest	ELA Tested Separately	X(1)	Y or blank			CAHSEEEnglish	NO
130	ELAGlossWL	ELA Translation Glossaries/Word Lists	X(1)	Y or blank			CAHSEEEnglish	NO
131	MathDirPrimeLang	Math Test Directions in Primary Language	X(1)	Y or blank			CAHSEEMath	NO

132	MathSupBreaks	Math Addistional Supervised Breaks	X(1)	Y or blank			CAHSEEMath	NO
133	MathSepTest	Math Tested Separately	X(1)	Y or blank			CAHSEEMath	NO
134	MathGlossWL	Math Translation Glossaries/Word lists	X(1)	Y or blank			CAHSEEMath	NO
135	ELAScoreCode	ELA Score Code	X(1)	R,S,A,E,I,Z,T,M,U,blank			CAHSEEEnglish	NO
136	MathScoreCode	Math Score Code	X(1)	R,S,A,E,I,Z,T,M,U,blank			CAHSEEMath	NO
0	YrTerm	Academic Year	X(4)	Must be an academic year in the format of '0607'			CAHSEEDemographics,CAHSEEMath,CAHSEEEnglish	YES
1	SchoolID	CDS Code	X(14)	Must be 14 characters in length and can only contain numeric characters	Must be equal to one of the 14 digit CDS school codes	00	CAHSEEDemographics,CAHSEEMath,CAHSEEEnglish	YES
2	StudentID	Student's Local District Identification Number	X(10)	Must contain a Local Student Id		XXXXXXXXXX	CAHSEEDemographics,CAHSEEMath,CAHSEEEnglish	YES
3	SSIDStudentNumber	SSID Student Number	X(10)	Numeric, U or blank		"	CAHSEEDemographics	NO
4	CharterNumber	Charter Number	999	Allow blanks.		"	CAHSEEDemographics	YES
5	Grade	Grade	X(2)	Must be 10,11,12,AE,U		U	CAHSEEDemographics	NO
6	Lname	Student's Last Name	X(11)	Must be between 1 and 11 characters in length and can only contain alpha characters			CAHSEEDemographics	YES
7	Fname	Student's First Name	X(9)	Must be between 1 and 9 characters in length and can only contain alpha characters			CAHSEEDemographics	YES
8	Birthdate	Date of Birth	D(8)	Valid date format: CCYYMMDD, where:		99999999	CAHSEEDemographics	YES

Cal-PASS Data Element Dictionary

Effective date: August 2008

Developed by Cal-PASS

				CCYY = the four digit calendar year MM = two digit month code: 01 - 12 DD = 01 - 31/30/29/28 Or 99999999				
9	Gender	Gender	X(1)	Must be F,M,U,*			CAHSEEDemographics	YES
10	EthnicityPrimary	Ethnicity Primary	X(3)	Must be 600,100,201,202,203,204,205,206,207,299,400,500,301,302,303,304,399,700,999		"	CAHSEEDemographics	NO
11	EthnSecAmerIndian	American Indian or Alaska Native	X(1)	Must be Y or blank or 1		"	CAHSEEDemographics	NO
12	EthnSecFilipino	Filipino	X(1)	Must be Y or blank or 1		"	CAHSEEDemographics	NO
13	EthnSecHisp	Hispanic or Latino	X(1)	Must be Y or blank or 1		"	CAHSEEDemographics	NO
14	EthnSecAfrAmer	African American or Black (not of Hispanic origin)	X(1)	Must be Y or blank or 1		"	CAHSEEDemographics	NO
15	EthnSecWhite	White (not of Hispanic origin)	X(1)	Must be Y or blank or 1		"	CAHSEEDemographics	NO
16	AsianChinese	Chinese	X(1)	Must be Y or blank or 1		"	CAHSEEDemographics	NO
17	AsianJapanese	Japanese	X(1)	Must be Y or blank or 1		"	CAHSEEDemographics	NO
18	AsianKorean	Korean	X(1)	Must be Y or blank or 1		"	CAHSEEDemographics	NO
19	AsianVietnamese	Vietnamese	X(1)	Must be Y or blank or 1		"	CAHSEEDemographics	NO
20	AsianIndian	Indian	X(1)	Must be Y or blank or 1		"	CAHSEEDemographics	NO
21	AsianLaotian	Loatian	X(1)	Must be Y or blank or 1		"	CAHSEEDemographics	NO
22	AsianCambodian	Cambodian	X(1)	Must be Y or blank or 1		"	CAHSEEDemographics	NO
23	AsianOther	Other Asian	X(1)	Must be Y or blank or 1		"	CAHSEEDemographics	NO
24	PaclslanderHawaiian	Native Hawaiian	X(1)	Must be Y or blank or 1		"	CAHSEEDemographics	NO

Cal-PASS Data Element Dictionary

Effective date: August 2008

Developed by Cal-PASS

25	PacIslanderGuamanian	Guamanian	X(1)	Must be Y or blank or 1		"	CAHSEEDemographics	NO
26	PacIslanderSamoaan	Samoan	X(1)	Must be Y or blank or 1		"	CAHSEEDemographics	NO
27	PacIslanderTahitian	Tahitian	X(1)	Must be Y or blank or 1		"	CAHSEEDemographics	NO
28	PacificIslanderOther	Other Pacific Islander	X(1)	Must be Y or blank or 1		"	CAHSEEDemographics	NO
29	StudentsPrimaryLanguage	Student's Primary Language	X(2)	00-99 or U=unknown			CAHSEEDemographics	NO
30	ParentEducationLevel	Parent/Guardian Education Level	X(2)	10, 11, 12, 13, 14, 15, U or blank		"	CAHSEEDemographics	NO
31	StudentsEnglishProficiency	Student's English Proficiency	X(1)	1,2,3,4,U or blank		"	CAHSEEDemographics	NO
32	ProgPartTitle	Title I Services	X(1)	Must be Y or blank or 1		"	CAHSEEDemographics	NO
33	ProgPartMigrant	Migrant Education	X(1)	Must be Y or blank or 1		"	CAHSEEDemographics	NO
34	ProgPartIndian	American Indian Education	X(1)	Must be Y or blank or 1		"	CAHSEEDemographics	NO
35	ProgPartGifted	Gifted and Talented	X(1)	Must be Y or blank or 1		"	CAHSEEDemographics	NO
36	ProgPartELD	EL in ELD - No EL	X(1)	1,2,3,4,5,6, U or blank		"	CAHSEEDemographics	NO
37	NSLP	National School Lunch Program	X(1)	Y,N,U or blank or *		"	CAHSEEDemographics	NO
38	SpecialEdDabltCode	Disability Code for Special Education Services	X(3)	000-130 or U=unknown			CAHSEEDemographics	NO
39	SpEDNPS	Special Ed at Non-Public School	X(1)	Y or N		N	CAHSEEDemographics	NO
40	SEC504	Sec 504 Plan	X(1)	Y or blank		"	CAHSEEDemographics	NO
41	IEP	IEP	X(1)	Y or blank		"	CAHSEEDemographics	NO
42	ELAAccomTransfer	Transfer of Responses to	X(1)	Y or blank		"	CAHSEEEnglish	NO

		answer document						
43	ELAAccomDictated MC	MC Responses Dictated	X(1)	Y or blank		"	CAHSEEEnglish	NO
44	ELAccomWP	WP-spelling and grammar tools turned off	X(1)	Y or blank		"	CAHSEEEnglish	NO
45	ELAAccomDictated Essay	Dictated Essays student provides all spelling and language conventions	X(1)	Y or blank		"	CAHSEEEnglish	NO
46	ELAAccomAssistive device	Assistive Device - no interference with independent student work	X(1)	Y or blank		"	CAHSEEEnglish	NO
47	ELAAccomBraille	Braille Version	X(1)	Y or blank		"	CAHSEEEnglish	NO
48	ELAAccomLargePrint	Large Print	X(1)	Y or blank		"	CAHSEEEnglish	NO
49	ELAAccomExtratime	Extra Time -- beyond test day	X(1)	Y or blank		"	CAHSEEEnglish	NO
50	ELAAccomBreaks	Supervised breaks within test section	X(1)	Y or blank		"	CAHSEEEnglish	NO
51	ELAAccomBesttime	Test given at beneficial time of day for student	X(1)	Y or blank		"	CAHSEEEnglish	NO
52	ELAAccomHome	Home/Hospital admin.	X(1)	Y or blank		"	CAHSEEEnglish	NO
53	ELAModDictionary	Dictionary	X(2)	Y or blank or DI		"	CAHSEEEnglish	NO
54	ELAModSign	MCE or Sign Language	X(2)	Y or blank or SL		"	CAHSEEEnglish	NO
55	ELAModOralPresentation	Oral Presentation	X(1)	Y or blank		"	CAHSEEEnglish	NO
56	ELAModWPwithchecks	WP-spelling and grammar check enabled	X(1)	Y or blank		"	CAHSEEEnglish	NO
57	ELAModEssayDictated	Essay dictated, scribe provides spelling, grammar and language	X(2)	Y or blank or RA		"	CAHSEEEnglish	NO

Cal-PASS Data Element Dictionary

Effective date: August 2008

Developed by Cal-PASS

		conventions						
58	ELAModAssisted evic	Assistive device -- interferes with independent student work	X(2)	Y or blank or AD		"	CAHSEEnglish	NO
59	MathAccomTransf er	Transer of Responses to answer document	X(1)	Y or blank		"	CAHSEEMath	NO
60	MathAccomDictat edMC	MC Responses Dictated	X(1)	Y or blank		"	CAHSEEMath	NO
61	MathAccomBraille	Braille Version	X(1)	Y or blank		"	CAHSEEMath	NO
62	MathAccomLargeP rint	Large Print	X(1)	Y or blank		"	CAHSEEMath	NO
63	MathAccomExtrati me	Extra Time -beyond day	X(1)	Y or blank		"	CAHSEEMath	NO
64	MathAccomBreaks	Supervised Breaks within sections	X(1)	Y or blank		"	CAHSEEMath	NO
65	MathAccomBestti me	Test given at Beneficial Time of Day for student	X(1)	Y or blank		"	CAHSEEMath	NO
66	MathAccomHome	Home/Hospital admin.	X(1)	Y or blank		"	CAHSEEMath	NO
67	MathModDictiona ry	Dictionary	X(2)	Y or blank or DI		"	CAHSEEMath	NO
68	MathAccomSign	MCE or Sign Language	X(1)	Y or blank		"	CAHSEEMath	NO
69	MathAccommOral Presentation	Oral Presentation	X(2)	Y or blank or RA		"	CAHSEEMath	NO
70	MathModCalculat or	Calculator Used	X(2)	Y or blank or CA		"	CAHSEEMath	NO
71	MathModTables	Arithmetic Table Used	X(2)	Y or blank or AT		"	CAHSEEMath	NO
72	MathModManipul atives	Math Manipulatives used	X(1)	Y or blank		"	CAHSEEMath	NO
73	MathModAssistive device	Assistive Device - interferes with	X(2)	Y or blank or AD		"	CAHSEEMath	NO

Cal-PASS Data Element Dictionary

Effective date: August 2008

Developed by Cal-PASS

		independent student work						
74	MathClassGeneral	General Math	X(2)	07-12 (grades), blank, U=unknown		"	CAHSEEMath	NO
75	MathClassPreAlgebra	Pre-Algebra	X(2)	07-12 (grades), blank, U=unknown		"	CAHSEEMath	NO
76	MathClassAlgebra1	Algebra 1	X(2)	07-12 (grades), blank, U=unknown		"	CAHSEEMath	NO
77	MathClassGeometry	Geometry	X(2)	07-12 (grades), blank, U=unknown		"	CAHSEEMath	NO
78	MathClassAlgebra2	Algebra 2	X(2)	07-12 (grades), blank, U=unknown		"	CAHSEEMath	NO
79	MathClassIntegMath1	Integrated Mathematics Course I	X(2)	07-12 (grades), blank, U=unknown		"	CAHSEEMath	NO
80	MathClassIntegMath2	Integrated Mathematics Course II	X(2)	07-12 (grades), blank, U=unknown		"	CAHSEEMath	NO
81	MathClassIntegMath3	Integrated Mathematics Course II	X(2)	07-12 (grades), blank, U=unknown		"	CAHSEEMath	NO
82	MathClassAdvanced	Advanced Mathematics Course	X(2)	07-12 (grades), blank, U=unknown		"	CAHSEEMath	NO
83	MathTestForm	Math Test Form	99	0 -- 99 or blank		"	CAHSEEMath	NO
84	MathTestDate	Math Test Date	X(8)	Valid date format: MMDDCCYY, where: CCYY = the four digit calendar year MM = two digit month code: 01 - 12 DD = 01 - 31/30/29/28 Or 99999999		99999999	CAHSEEMath	YES
85	MathPassed	Math -- Passed/Not Passed Indicator	X(1)	A,C,E,H,I,N,P,R,X,T,Z			CAHSEEMath	NO
86	MathScaleScore	Math Scale Score	999	275-450 or blank		"	CAHSEEMath	YES

Cal-PASS Data Element Dictionary

Effective date: August 2008

Developed by Cal-PASS

87	MathPSNumberCorrect	Math Probability & Statistics Number Correct	999	0 - 999 or blank		"	CAHSEEMath	NO
88	MathPSPercentCorrect	Math Probability & Statistics Percent Correct	999	0 - 100 or blank		"	CAHSEEMath	NO
89	MathNSNumberCorrect	Math Number Sense Correct	999	0 - 999 or blank		"	CAHSEEMath	NO
90	MathNSPercentCorrect	Math Number Sense Percent Correct	999	0 - 100 or blank		"	CAHSEEMath	NO
91	MathAFNumberCorrect	Math Algebra & Functions Number Correct	999	0 - 999 or blank		"	CAHSEEMath	NO
92	MathAFPercentCorrect	Math Algebra & Function Percent Correct	999	0 - 100 or blank		"	CAHSEEMath	NO
93	MathMGNumberCorrect	Math Measurement & Geometry Number Correct	999	0 - 999 or blank		"	CAHSEEMath	NO
94	MathMGPercentCorrect	Math Measurement & Geometry Percent Correct	999	0 - 100 or blank		"	CAHSEEMath	NO
95	MathA1NumberCorrect	Math Algebra 1 Number Correct	999	0 - 999 or blank		"	CAHSEEMath	NO
96	MathA1PercentCorrect	Math Algebra 1 Percent Correct	999	0 - 100 or blank		"	CAHSEEMath	NO
97	ELATestForm	ELA Test Form	99	0 - 99 or blank		"	CAHSEEEnglish	NO
98	ELATestDate	ELA Test Date	X(8)	Valid date format: MMDDCCYY, where: CCYY = the four digit calendar year MM = two digit month code: 01 - 12 DD = 01 - 31/30/29/28		99999999	CAHSEEEnglish	YES

Cal-PASS Data Element Dictionary

Effective date: August 2008

Developed by Cal-PASS

				Or 99999999 of earlier years are MM/DD/YY				
99	ELAPassed	ELA - Passed/Not Passed Indicator	X(1)	A,C,E,H,I,N,P,R,X,T,Z			CAHSEEEnglish	NO
100	ELAScaleScore	ELA Scale Score	999	250-450 or blank		"	CAHSEEEnglish	YES
101	ELARReadingWANu mberCorrect	ELA Reading - Word Analysis Number Correct	999	0-999 or blank		"	CAHSEEEnglish	NO
102	ELARReadingWAPer centCorrect	ELA Reading - Word Analysis Percent Correct	999	0-100 or blank		"	CAHSEEEnglish	NO
103	ELARReadingRCNu mberCorrect	ELA Reading - Reading Comprehension Number Correct	999	0-999 or blank		"	CAHSEEEnglish	NO
104	ELARReadingRCPerc entCorrect	ELA Reading - Reading Comprehension Percent Correct	999	0-100 or blank		"	CAHSEEEnglish	NO
105	ELARReadingLANu mberCorrect	ELA Reading - Literary Responses and Analysis Number Correct	999	0-999 or blank		"	CAHSEEEnglish	NO
106	ELARReadingLAPerc entCorrect	ELA Reading - Literary Responses and Analysis Percent Correct	999	0-100 or blank		"	CAHSEEEnglish	NO
107	ELAWritinWNum berCorrect	ELA Writing - Writing Strategies Number Correct	999	0-999 or blank		"	CAHSEEEnglish	NO
108	ELAWritingWSPerc entCorrect	ELA Writing - Writing Strategies Percent Correct	999	0-100 or blank		"	CAHSEEEnglish	NO
109	ELAWritingWCNu mberCorrect	ELA Writing - Writing Conventions Number Correct	999	0-999 or blank		"	CAHSEEEnglish	NO
110	ELAWritingWCPerc	ELA Writing - Writing	999	0-100 or blank		"	CAHSEEEnglish	NO

Cal-PASS Data Element Dictionary

Effective date: August 2008

Developed by Cal-PASS

	entCorrect	Conventions Percent Correct						
111	ELAWritingApplication1	ELA Writing Applications - Essay Scale Score	X(3)	0.0 - 4.0 or blank		"	CAHSEEEnglish	NO
112	ParentCityStateZip	Guardian City, State, Zip	X(30)	30 characters alpha or blank		"	CAHSEEDemographics	NO
113	MathSpecVersionAudioCD	Math Spec Version Audio CD	X(2)	AC or blank		"	CAHSEEMath	NO
114	MathSpecVersionLargePrint	Math Spec Version Large Print	X(2)	LP or blank		"	CAHSEEMath	NO
115	MathSpecVersionBraille	Math Spec Version Braille	X(2)	BR or blank		"	CAHSEEMath	NO
116	ELASpecVersionAudioCD	ELA Spec Version Audio CD	X(2)	AC or blank		"	CAHSEEEnglish	NO
117	ELASpecVersionLargePrint	ELA Spec Version Large Print	X(2)	LP or blank		"	CAHSEEEnglish	NO
118	ELASpecVersionBraille	ELA Spec Version Braille	X(2)	BR or blank		"	CAHSEEEnglish	NO
119	ELDateEnrolled	EL Date Enrolled	X(8)	MMDDYYYY, U or blank or YYYY		99999999	CAHSEEEnglish	NO
120	RFEPDateReclassified	RFEP Date Reclassified	X(8)	MMDDYYYY, U or blank or YYYY		99999999	CAHSEEDemographics	NO
121	RFEPStudent	RFEP Student Score Proficient 3 Years on ELA CST	X(1)	Y,N,U or blank		"	CAHSEEDemographics	NO
122	ASAMSchool	ASAM School	X(1)	Y,N		N	CAHSEEDemographics	NO
123	CAPAAssessed	CAPA School	X(1)	Y,N		N	CAHSEEDemographics	NO
124	ResidenceCountyClientCode	Residence County Client Code	X(2)	00-99, U or blank		"	CAHSEEDemographics	NO
125	TotalELAResponses	Total ELA MC Responses	999	0-79 or blank		"	CAHSEEEnglish	NO

Cal-PASS Data Element Dictionary

Effective date: August 2008

Developed by Cal-PASS

126	TotalMathResponses	Total Math Responses	999	0-92 or blank		"	CAHSEEMath	NO
127	ELADirPrimeLang	ELA Test Directions in Primary Language	X(1)	Y or blank		"	CAHSEEEnglish	NO
128	ELASupBreaks	ELA Additional Supervised Breaks	X(1)	Y or blank			CAHSEEEnglish	NO
129	ELASepTest	ELA Tested Separately	X(1)	Y or blank			CAHSEEEnglish	NO
130	ELAGlossWL	ELA Translation Glossaries/Word Lists	X(1)	Y or blank			CAHSEEEnglish	NO
131	MathDirPrimeLang	Math Test Directions in Primary Language	X(1)	Y or blank			CAHSEEMath	NO
132	MathSupBreaks	Math Additional Supervised Breaks	X(1)	Y or blank			CAHSEEMath	NO
133	MathSepTest	Math Tested Separately	X(1)	Y or blank			CAHSEEMath	NO
134	MathGlossWL	Math Translation Glossaries/Word lists	X(1)	Y or blank			CAHSEEMath	NO
135	ELAScoreCode	ELA Score Code	X(1)	R,S,A,E,I,Z,T,M,U,blank			CAHSEEEnglish	NO
136	MathScoreCode	Math Score Code	X(1)	R,S,A,E,I,Z,T,M,U,blank			CAHSEEMath	NO
0	YrTerm	Academic Year	X(4)	Must be an academic year in the format of '0607'			CAHSEEDemographics,CAHSEEMath,CAHSEEEnglish	YES
1	SchoolID	CDS Code	X(14)	Must be 14 characters in length and can only contain numeric characters	Must be equal to one of the 14 digit CDS school codes	00	CAHSEEDemographics,CAHSEEMath,CAHSEEEnglish	YES
2	StudentID	Student's Local District Identification Number	X(10)	Must contain a Local Student Id		XXXXXXXXXX	CAHSEEDemographics,CAHSEEMath,CAHSEEEnglish	YES
3	SSIDStudentNumber	SSID Student Number	X(10)	Numeric, U or blank		"	CAHSEEDemographics	NO
4	CharterNumber	Charter Number	9999	Allow blanks.		"	CAHSEEDemographics	YES

Cal-PASS Data Element Dictionary

Effective date: August 2008

Developed by Cal-PASS

5	Grade	Grade	X(2)	Must be 10,11,12,AE,U		U	CAHSEEDemographics	NO
6	Lname	Student's Last Name	X(11)	Must be between 1 and 11 characters in length and can only contain alpha characters			CAHSEEDemographics	YES
7	Fname	Student's First Name	X(9)	Must be between 1 and 9 characters in length and can only contain alpha characters			CAHSEEDemographics	YES
8	Birthdate	Date of Birth	D(8)	Valid date format: CCYYMMDD, where: CCYY = the four digit calendar year MM = two digit month code: 01 - 12 DD = 01 - 31/30/29/28 Or 99999999		99999999	CAHSEEDemographics	YES
9	Gender	Gender	X(1)	Must be F,M,U,*			CAHSEEDemographics	YES
10	EthnicityPrimary	Ethnicity Primary	X(3)	Must be 600,100,201,202,203,204,205,206,207,299,400,500,301,302,303,304,399,700,999		"	CAHSEEDemographics	NO
11	EthnSecAmerIndian	American Indian or Alaska Native	X(1)	Must be Y or blank or 1		"	CAHSEEDemographics	NO
12	EthnSecFilipino	Filipino	X(1)	Must be Y or blank or 1		"	CAHSEEDemographics	NO
13	EthnSecHisp	Hispanic or Latino	X(1)	Must be Y or blank or 1		"	CAHSEEDemographics	NO
14	EthnSecAfrAmer	African American or Black (not of Hispanic origin)	X(1)	Must be Y or blank or 1		"	CAHSEEDemographics	NO
15	EthnSecWhite	White (not of Hispanic origin)	X(1)	Must be Y or blank or 1		"	CAHSEEDemographics	NO

Cal-PASS Data Element Dictionary

Effective date: August 2008

Developed by Cal-PASS

16	AsianChinese	Chinese	X(1)	Must be Y or blank or 1		"	CAHSEEDemographics	NO
17	AsianJapanese	Japanese	X(1)	Must be Y or blank or 1		"	CAHSEEDemographics	NO
18	AsianKorean	Korean	X(1)	Must be Y or blank or 1		"	CAHSEEDemographics	NO
19	AsianVietnamese	Vietnamese	X(1)	Must be Y or blank or 1		"	CAHSEEDemographics	NO
20	AsianIndian	Indian	X(1)	Must be Y or blank or 1		"	CAHSEEDemographics	NO
21	AsianLaotian	Loatian	X(1)	Must be Y or blank or 1		"	CAHSEEDemographics	NO
22	AsianCambodian	Cambodian	X(1)	Must be Y or blank or 1		"	CAHSEEDemographics	NO
23	AsianOther	Other Asian	X(1)	Must be Y or blank or 1		"	CAHSEEDemographics	NO
24	PaclslanderHawaiian	Native Hawaiian	X(1)	Must be Y or blank or 1		"	CAHSEEDemographics	NO
25	PaclslanderGuamanian	Guamanian	X(1)	Must be Y or blank or 1		"	CAHSEEDemographics	NO
26	PaclslanderSamoaan	Samoan	X(1)	Must be Y or blank or 1		"	CAHSEEDemographics	NO
27	PaclslanderTahitian	Tahitian	X(1)	Must be Y or blank or 1		"	CAHSEEDemographics	NO
28	PacificIslanderOther	Other Pacific Islander	X(1)	Must be Y or blank or 1		"	CAHSEEDemographics	NO
29	StudentsPrimaryLanguage	Student's Primary Language	X(2)	00-99 or U=unknown			CAHSEEDemographics	NO
30	ParentEducationLevel	Parent/Guardian Education Level	X(2)	10, 11, 12, 13, 14, 15, U or blank		"	CAHSEEDemographics	NO
31	StudentsEnglishProficiency	Student's English Proficiency	X(1)	1,2,3,4,U or blank		"	CAHSEEDemographics	NO
32	ProgPartTitleI	Title I Services	X(1)	Must be Y or blank		"	CAHSEEDemographics	NO
33	ProgPartMigrant	Migrant Education	X(1)	Must be Y or blank		"	CAHSEEDemographics	NO
34	ProgPartIndian	American Indian Education	X(1)	Must be Y or blank		"	CAHSEEDemographics	NO
35	ProgPartGifted	Gifted and Talented	X(1)	Must be Y or blank		"	CAHSEEDemographics	NO
36	ProgPartELD	EL in ELD - No EL	X(1)	1,2,3,4,5,6, U or blank		"	CAHSEEDemographics	NO

Cal-PASS Data Element Dictionary

Effective date: August 2008

Developed by Cal-PASS

37	NSLP	National School Lunch Program	X(1)	Y,N,U or blank		"	CAHSEEDemographics	NO
38	SpecialEdDabltCode	Disability Code for Special Education Services	X(3)	000, 210, 220, 230, 240, 250, 260, 270, 280, 290, 300, 310, 320, 330 or U=unknown			CAHSEEDemographics	NO
39	SpEDNPS	Special Ed at Non-Public School	X(1)	Y or N		N	CAHSEEDemographics	NO
40	SEC504	Sec 504 Plan	X(1)	Y or blank		"	CAHSEEDemographics	NO
41	IEP	IEP	X(1)	Y or blank		"	CAHSEEDemographics	NO
42	ELAAcomTransfer	Transfer of Responses to answer document	X(1)	Y or blank		"	CAHSEEEnglish	NO
43	ELAAcomDictated MC	MC Responses Dictated	X(1)	Y or blank		"	CAHSEEEnglish	NO
44	ELAAcomWP	WP-spelling and grammar tools turned off	X(1)	Y or blank		"	CAHSEEEnglish	NO
45	ELAAcomDictated Essay	Dictated Essays student provides all spelling and language conventions	X(1)	Y or blank		"	CAHSEEEnglish	NO
46	ELAAcomAssistive device	Assistive Device - no interference with independent student work	X(1)	Y or blank		"	CAHSEEEnglish	NO
47	ELAAcomBraille	Braille Version	X(1)	Y or blank		"	CAHSEEEnglish	NO
48	ELAAcomLargePrint	Large Print	X(1)	Y or blank		"	CAHSEEEnglish	NO
49	ELAAcomExtratime	Extra Time -- beyond test day	X(1)	Y or blank		"	CAHSEEEnglish	NO
50	ELAAcomBreaks	Supervised breaks within test section	X(1)	Y or blank		"	CAHSEEEnglish	NO
51	ELAAcomBesttime	Test given at beneficial	X(1)	Y or blank		"	CAHSEEEnglish	NO

Cal-PASS Data Element Dictionary

Effective date: August 2008

Developed by Cal-PASS

	e	time of day for student						
52	ELAAccomHome	Home/Hospital admin.	X(1)	Y or blank		"	CAHSEEEnglish	NO
53	ELAModDictionary	Dictionary	X(2)	Y or blank		"	CAHSEEEnglish	NO
54	ELAModSign	MCE or Sign Language	X(2)	Y or blank		"	CAHSEEEnglish	NO
55	ELAModOralPresentation	Oral Presentation	X(1)	Y or blank		"	CAHSEEEnglish	NO
56	ELAModWPwithchecks	WP-spelling and grammar check enabled	X(1)	Y or blank		"	CAHSEEEnglish	NO
57	ELAModEssayDictated	Essay dictated, scribe provides spelling, grammar and language conventions	X(2)	Y or blank		"	CAHSEEEnglish	NO
58	ELAModAssistive device	Assistive device -- interferes with independent student work	X(2)	Y or blank		"	CAHSEEEnglish	NO
59	MathAccomTransfer	Transfer of Responses to answer document	X(1)	Y or blank		"	CAHSEEMath	NO
60	MathAccomDictatedMC	MC Responses Dictated	X(1)	Y or blank		"	CAHSEEMath	NO
61	MathAccomBraille	Braille Version	X(1)	Y or blank		"	CAHSEEMath	NO
62	MathAccomLargePrint	Large Print	X(1)	Y or blank		"	CAHSEEMath	NO
63	MathAccomExtratime	Extra Time -beyond day	X(1)	Y or blank		"	CAHSEEMath	NO
64	MathAccomBreaks	Supervised Breaks within sections	X(1)	Y or blank		"	CAHSEEMath	NO
65	MathAccomBesttime	Test given at Beneficial Time of Day for student	X(1)	Y or blank		"	CAHSEEMath	NO
66	MathAccomHome	Home/Hospital admin.	X(1)	Y or blank		"	CAHSEEMath	NO
67	MathModDictionary	Dictionary	X(2)	Y or blank		"	CAHSEEMath	NO

Cal-PASS Data Element Dictionary

Effective date: August 2008

Developed by Cal-PASS

	ry							
68	MathAccomSign	MCE or Sign Language	X(1)	Y or blank		"	CAHSEEMath	NO
69	MathAccommOral Presentation	Oral Presentation	X(2)	Y or blank		"	CAHSEEMath	NO
70	MathModCalcu- lator	Calculator Used	X(2)	Y or blank		"	CAHSEEMath	NO
71	MathModTables	Arithmetic Table Used	X(2)	Y or blank		"	CAHSEEMath	NO
72	MathModManipul- atives	Math Manipulatives used	X(1)	Y or blank		"	CAHSEEMath	NO
73	MathModAssistive device	Assistive Device - interferes with independent student work	X(2)	Y or blank		"	CAHSEEMath	NO
74	MathClassGeneral	General Math	X(2)	07-12 (grades), blank, U=unknown		"	CAHSEEMath	NO
75	MathClassPreAlge- bra	Pre-Algebra	X(2)	07-12 (grades), blank, U=unknown		"	CAHSEEMath	NO
76	MathClassAlgebra 1	Algebra 1	X(2)	07-12 (grades), blank, U=unknown		"	CAHSEEMath	NO
77	MathClassGeomet- ry	Geometry	X(2)	07-12 (grades), blank, U=unknown		"	CAHSEEMath	NO
78	MathClassAlgebra 2	Algebra 2	X(2)	07-12 (grades), blank, U=unknown		"	CAHSEEMath	NO
79	MathClassIntegMa- th1	Integrated Mathematics Course I	X(2)	07-12 (grades), blank, U=unknown		"	CAHSEEMath	NO
80	MathClassIntegMa- th2	Integrated Mathematics Course II	X(2)	07-12 (grades), blank, U=unknown		"	CAHSEEMath	NO
81	MathClassIntegMa- th3	Integrated Mathematics Course II	X(2)	07-12 (grades), blank, U=unknown		"	CAHSEEMath	NO
82	MathClassAdvance- d	Advanced Mathematics Course	X(2)	07-12 (grades), blank, U=unknown		"	CAHSEEMath	NO

Cal-PASS Data Element Dictionary

Effective date: August 2008

Developed by Cal-PASS

83	MathTestForm	Math Test Form	999	0 -- 999 or blank		"	CAHSEEMath	NO
84	MathTestDate	Math Test Date	X(8)	Valid date format: CCYYMMDD, where: CCYY = the four digit calendar year MM = two digit month code: 01 - 12 DD = 01 - 31/30/29/28 Or 99999999		99999999	CAHSEEMath	YES
85	MathPassed	Math -- Passed/Not Passed Indicator	X(1)	A,C,E,H,I,N,P,R,X,T,Z,M			CAHSEEMath	NO
86	MathScaleScore	Math Scale Score	999	275-450 or blank		"	CAHSEEMath	YES
87	MathPSNumberCo rrect	Math Probability & Statistics Number Correct	999	0 - 999 or blank		"	CAHSEEMath	NO
88	MathPSPercentCor rect	Math Probability & Statistics Percent Correct	999	0 - 100 or blank		"	CAHSEEMath	NO
89	MathNSNumberCo rrect	Math Number Sense Correct	999	0 - 999 or blank		"	CAHSEEMath	NO
90	MathNSPercentCo rrect	Math Number Sense Percent Correct	999	0 - 100 or blank		"	CAHSEEMath	NO
91	MathAFNumberCo rrect	Math Algebra & Functions Number Correct	999	0 - 999 or blank		"	CAHSEEMath	NO
92	MathAFPercentCor rect	Math Algebra & Function Percent Correct	999	0 - 100 or blank		"	CAHSEEMath	NO
93	MathMGNumberC orrect	Math Measurement & Geometry Number Correct	999	0 - 999 or blank		"	CAHSEEMath	NO
94	MathMGPercentC orrect	Math Measurement & Geometry Percent Correct	999	0 - 100 or blank		"	CAHSEEMath	NO

Cal-PASS Data Element Dictionary

Effective date: August 2008

Developed by Cal-PASS

95	MathA1NumberCorrect	Math Algebra 1 Number Correct	999	0 - 999 or blank		"	CAHSEEMath	NO
96	MathA1PercentCorrect	Math Algebra 1 Percent Correct	999	0 - 100 or blank		"	CAHSEEMath	NO
97	ELATestForm	ELA Test Form	999	0 - 999 or blank		"	CAHSEEEnglish	NO
98	ELATestDate	ELA Test Date	X(8)	Valid date format: CCYYMMDD, where: CCYY = the four digit calendar year MM = two digit month code: 01 - 12 DD = 01 - 31/30/29/28 Or 99999999 of earlier years are MM/DD/YY		99999999	CAHSEEEnglish	YES
99	ELAPassed	ELA - Passed/Not Passed Indicator	X(1)	A,C,E,H,I,N,P,R,X,T,Z,M			CAHSEEEnglish	NO
100	ELAScaleScore	ELA Scale Score	999	270-450 or blank		"	CAHSEEEnglish	YES
101	ELARReadingWANumberCorrect	ELA Reading - Word Analysis Number Correct	999	0-999 or blank		"	CAHSEEEnglish	NO
102	ELARReadingWAPercentCorrect	ELA Reading - Word Analysis Percent Correct	999	0-100 or blank		"	CAHSEEEnglish	NO
103	ELARReadingRCNumberCorrect	ELA Reading - Reading Comprehension Number Correct	999	0-999 or blank		"	CAHSEEEnglish	NO
104	ELARReadingRCPercentCorrect	ELA Reading - Reading Comprehension Percent Correct	999	0-100 or blank		"	CAHSEEEnglish	NO
105	ELARReadingLANumberCorrect	ELA Reading - Literary Responses and Analysis Number Correct	999	0-999 or blank		"	CAHSEEEnglish	NO
106	ELARReadingLAPercentCorrect	ELA Reading - Literary Responses and Analysis	999	0-100 or blank		"	CAHSEEEnglish	NO

Cal-PASS Data Element Dictionary

Effective date: August 2008

Developed by Cal-PASS

		Percent Correct						
107	ELAWritinWSNum berCorrect	ELA Writing - Writing Strategies Number Correct	999	0-999 or blank		"	CAHSEEEnglish	NO
108	ELAWritingWSPerc entCorrect	ELA Writing - Writing Strategies Percent Correct	999	0-100 or blank		"	CAHSEEEnglish	NO
109	ELAWritingWCNu mberCorrect	ELA Writing - Writing Conventions Number Correct	999	0-999 or blank		"	CAHSEEEnglish	NO
110	ELAWritingWCPerc entCorrect	ELA Writing - Writing Conventions Percent Correct	999	0-100 or blank		"	CAHSEEEnglish	NO
111	ELAWritingApplicE ssay1	ELA Writing Applications - Essay Scale Score	X(3)	0.0 - 4.0 or blank		"	CAHSEEEnglish	NO
112	ParentCityStateZip	Guardian City, State, Zip	X(41)	41 characters alpha or blank		"	CAHSEEDemographics	NO
113	MathSpecVersionA udioCD	Math Spec Version Audio CD	X(2)	AC or blank		"	CAHSEEMath	NO
114	MathSpecVersionL argePrint	Math Spec Version Large Print	X(2)	LP or blank		"	CAHSEEMath	NO
115	MathSpecVersionB raille	Math Spec Version Braille	X(2)	BR or blank		"	CAHSEEMath	NO
116	ELASpecVersionAu dioCD	ELA Spec Version Audio CD	X(2)	AC or blank		"	CAHSEEEnglish	NO
117	ELASpecVersionLar gePrint	ELA Spec Version Large Print	X(2)	LP or blank		"	CAHSEEEnglish	NO
118	ELASpecVersionBr aille	ELA Spec Version Braille	X(2)	BR or blank		"	CAHSEEEnglish	NO
119	ELDateEnrolled	EL Date Enrolled	X(8)	CCYYMMDD, U or blank		99999999	CAHSEEEnglish	NO
120	RFEPDateReclassifi	RFEP Date Reclassified	X(8)	CCYYMMDD, U or blank		99999999	CAHSEEDemographics	NO

Cal-PASS Data Element Dictionary

Effective date: August 2008

Developed by Cal-PASS

	ed							
121	RFEPStudent	RFEP Student Score Proficient 3 Years on ELA CST	X(1)	Y,N,U or blank		"	CAHSEEDemographics	NO
122	ASAMSchool	ASAM School	X(1)	Y,N		N	CAHSEEDemographics	NO
123	CAPAAssessed	CAPA School	X(1)	Y,N		N	CAHSEEDemographics	NO
124	ResidenceCountyClientCode	Residence County Client Code	X(2)	00-99, U or blank		"	CAHSEEDemographics	NO
125	TotalELAResponses	Total ELA MC Responses	999	0-79 or blank		"	CAHSEEEnglish	NO
126	TotalMathResponses	Total Math Responses	999	0-92 or blank		"	CAHSEEMath	NO
127	ELADirPrimeLang	ELA Test Directions in Primary Language	X(1)	Y or blank		"	CAHSEEEnglish	NO
128	ELASupBreaks	ELA Additional Supervised Breaks	X(1)	Y or blank			CAHSEEEnglish	NO
129	ELASepTest	ELA Tested Separately	X(1)	Y or blank			CAHSEEEnglish	NO
130	ELAGlossWL	ELA Translation Glossaries/Word Lists	X(1)	Y or blank			CAHSEEEnglish	NO
131	MathDirPrimeLang	Math Test Directions in Primary Language	X(1)	Y or blank			CAHSEEMath	NO
132	MathSupBreaks	Math Addistional Supervised Breaks	X(1)	Y or blank			CAHSEEMath	NO
133	MathSepTest	Math Tested Separately	X(1)	Y or blank			CAHSEEMath	NO
134	MathGlossWL	Math Translation Glossaries/Word lists	X(1)	Y or blank			CAHSEEMath	NO
135	ELAScoreCode	ELA Score Code	X(1)	R,S,A,E,I,Z,T,M,U,blank			CAHSEEEnglish	NO
136	MathScoreCode	Math Score Code	X(1)	R,S,A,E,I,Z,T,M,U,blank			CAHSEEMath	NO
137	Grade12+	Grade 12+ Student	X(1)	Y or N			CAHSEEDemographics	NO
138	ELAPrfmncLvl	ELA Performance Level	X(1)	1, 2, 3 or 4			CAHSEEEnglish	NO

Cal-PASS Data Element Dictionary

Effective date: August 2008

Developed by Cal-PASS

139	MathPrfrmncLvl	Math Performance Level	X(1)	1, 2, 3 or 4			CAHSEEMath	NO
-----	----------------	------------------------	------	--------------	--	--	------------	----

4.0 Appendix A –Language Codes

4.1 Numeric order by code

00 English	30 Samoan
01 Spanish	32 Thai
02 Vietnamese	33 Turkish
03 Cantonese	34 Tongan
04 Korean	35 Urdu
05 Filipino (Tagalog or Pilipino)	36 Cebuano (Visayan)
06 Portuguese	37 American Sign Language
07 Mandarin (Putonghua)	38 Ukrainian
08 Japanese	39 Chaozhou (Chaochow)
09 Khmer (Cambodian)	40 Pashto
10 Lao	41 Polish
11 Arabic	42 Assyrian
12 Armenian	43 Gujarati
13 Burmese	44 Mien (Yao)
15 Dutch	45 Rumanian
16 Farsi (Persian)	46 Taiwanese
17 French	47 Lahu
18 German	48 Marshallese
19 Greek	49 Mixteco
20 Chamorro (Guamanian)	50 Khmu
21 Hebrew	51 Kurdish (Kurdi, Kurmanji)
22 Hindi	52 Serbo-Croatian - (Bosnian, Croatian, Serbian)
23 Hmong	53 Toishanese
24 Hungarian	54 Chaldean
25 Ilocano	56 Albanian
26 Indonesian	57 Tigrinya
27 Italian	60 Somali
28 Punjabi	61 Bengali
29 Russian	99 Other Non-English language

4.2 Alphabetical order by language

00 English	50 Khmu
56 Albanian	04 Korean
37 American Sign Language	51 Kurdish
11 Arabic	47 Lahu
12 Armenian	10 Lao
42 Assyrian	07 Mandarin (Putonghua)
58 Bosnian	48 Marshallese
13 Burmese	44 Mien (Yao)
03 Cantonese	49 Mixteco
36 Cebuano (Visayan)	40 Pashto
54 Chaldean	05 Filipino (Tagalog or Pilipino)
20 Chamorro (Guamanian)	41 Polish
39 Chaozhou (Chaochow)	06 Portuguese
14 Croatian	28 Punjabi
15 Dutch	45 Rumanian
16 Farsi (Persian)	29 Russian
17 French	30 Samoan
18 German	52 Serbo-Croatian (Serbian)
19 Greek	01 Spanish
43 Gujarati	46 Taiwanese
21 Hebrew	32 Thai
22 Hindi	57 Tigrinya
23 Hmong	53 Toishanese
24 Hungarian	34 Tongan
25 Ilocano	33 Turkish
26 Indonesian	38 Ukrainian
27 Italian	35 Urdu
08 Japanese	02 Vietnamese
09 Khmer (Cambodian)	99 Other Non-English language or unknown